



# ARP5L rabbit pAb

<b>Catalog No</b>	BYab-08803
<b>Isotype</b>	IgG
<b>Reactivity</b>	Human; Mouse;Rat
<b>Applications</b>	WB
<b>Gene Name</b>	ARPC5L
<b>Protein Name</b>	ARP5L
<b>Immunogen</b>	Synthesized peptide derived from human ARP5L AA range: 4-54
<b>Specificity</b>	This antibody detects endogenous levels of ARP5L at Human/Mouse/Rat
<b>Formulation</b>	Liquid in PBS containing 50% glycerol, 0.5% BSA and 0.02% sodium azide.
<b>Source</b>	Polyclonal, Rabbit,IgG
<b>Purification</b>	The antibody was affinity-purified from rabbit serum by affinity-chromatography using specific immunogen.
<b>Dilution</b>	WB 1: 500-2000
<b>Concentration</b>	1 mg/ml
<b>Purity</b>	≥90%
<b>Storage Stability</b>	-20°C/1 year
<b>Synonyms</b>	
<b>Observed Band</b>	
<b>Cell Pathway</b>	Cytoplasm, cytoskeleton .
<b>Tissue Specificity</b>	
<b>Function</b>	function:May function as component of the Arp2/3 complex which is involved in regulation of actin polymerization and together with an activating nucleation-promoting factor (NPF) mediates the formation of branched actin networks.,similarity:Belongs to the ARPC5 family.,subunit:May be a component of the Arp2/3 complex in which it may replace ARPC5.,
<b>Background</b>	
<b>matters needing attention</b>	Avoid repeated freezing and thawing!

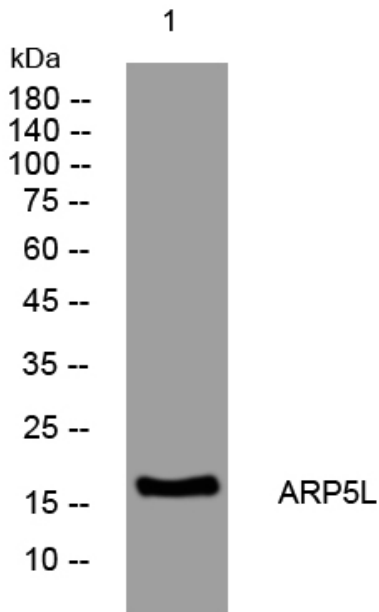
Nanjing BYabscience technology Co.,Ltd



**Usage suggestions**

This product can be used in immunological reaction related experiments. For more information, please consult technical personnel.

**Products Images**



Western blot analysis of lysates from VEC cells, primary antibody was diluted at 1:1000, 4° over night