



DJC13 rabbit pAb

Catalog No	BYab-08798
Isotype	IgG
Reactivity	Human;Rat;Mouse;
Applications	WB
Gene Name	DNAJC13 KIAA0678 RME8
Protein Name	DJC13
Immunogen	Synthesized peptide derived from human DJC13 AA range: 1576-1626
Specificity	This antibody detects endogenous levels of DJC13 at Human
Formulation	Liquid in PBS containing 50% glycerol, 0.5% BSA and 0.02% sodium azide.
Source	Polyclonal, Rabbit,IgG
Purification	The antibody was affinity-purified from rabbit serum by affinity-chromatography using specific immunogen.
Dilution	WB 1: 500-2000
Concentration	1 mg/ml
Purity	≥90%
Storage Stability	-20°C/1 year
Synonyms	
Observed Band	
Cell Pathway	Early endosome . Early endosome membrane ; Peripheral membrane protein . Endosome membrane .
Tissue Specificity	
Function	sequence caution:Contaminating sequence. Potential poly-A sequence starting in position 748.,sequence caution:Contaminating sequence. Potential poly-A sequence.,sequence caution:Translated as Glu.,similarity:Contains 1 J domain.,
Background	This gene encodes a member of the Dnaj protein family whose members act as co-chaperones of a partner heat-shock protein by binding to the latter and stimulating ATP hydrolysis. The encoded protein associates with the heat-shock protein Hsc70 and plays a role in clathrin-mediated endocytosis. It may also be involved in post-endocytic transport mechanisms via its associations with other proteins, including the sorting nexin SNX1. Mutations in this gene are associated with Parkinson's disease. [provided by RefSeq, Jun 2016],

Nanjing BYabscience technology Co.,Ltd



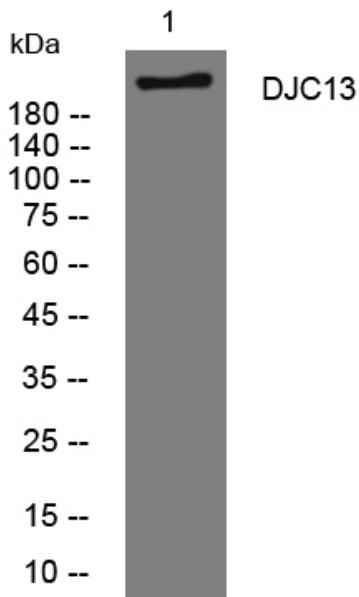
matters needing attention

Avoid repeated freezing and thawing!

Usage suggestions

This product can be used in immunological reaction related experiments. For more information, please consult technical personnel.

Products Images



Western blot analysis of lysates from HuvEc cells, primary antibody was diluted at 1:1000, 4° over night