



CC147 rabbit pAb

Catalog No	BYab-08794
Isotype	IgG
Reactivity	Human;Rat;Mouse;
Applications	WB
Gene Name	CCDC147 C10orf80
Protein Name	CC147
Immunogen	Synthesized peptide derived from human CC147 AA range: 723-773
Specificity	This antibody detects endogenous levels of CC147 at Human
Formulation	Liquid in PBS containing 50% glycerol, 0.5% BSA and 0.02% sodium azide.
Source	Polyclonal, Rabbit,IgG
Purification	The antibody was affinity-purified from rabbit serum by affinity-chromatography using specific immunogen.
Dilution	WB 1: 500-2000
Concentration	1 mg/ml
Purity	≥90%
Storage Stability	-20°C/1 year
Synonyms	
Observed Band	
Cell Pathway	Cell projection, cilium . Cell projection, cilium, flagellum . Cytoplasm, cytoskeleton, microtubule organizing center, centrosome . Localized to the entire flagellum and predominantly concentrated in the midpiece. Co-localizes with ODFP2 at the centrosome (By similarity). .
Tissue Specificity	
Function	similarity:Contains 3 LRR (leucine-rich) repeats.,
Background	
matters needing attention	Avoid repeated freezing and thawing!

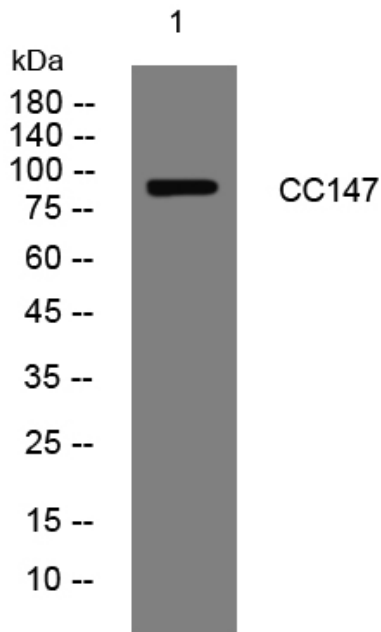
Nanjing BYabscience technology Co.,Ltd



Usage suggestions

This product can be used in immunological reaction related experiments. For more information, please consult technical personnel.

Products Images



Western blot analysis of lysates from HCT116 cells, primary antibody was diluted at 1:1000, 4° over night