



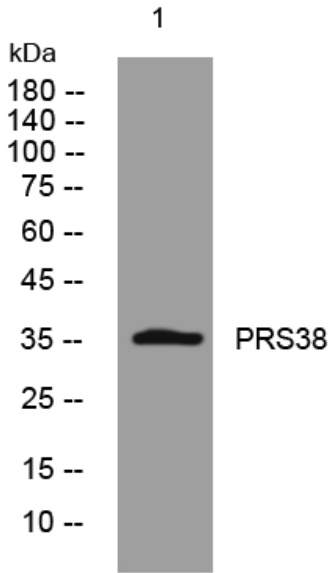
PRS38 rabbit pAb

Catalog No	BYab-08787
Isotype	IgG
Reactivity	Human; Mouse
Applications	WB
Gene Name	PRSS38 MPN2
Protein Name	PRS38
Immunogen	Synthesized peptide derived from human PRS38 AA range: 212-262
Specificity	This antibody detects endogenous levels of PRS38 at Human/Mouse
Formulation	Liquid in PBS containing 50% glycerol, 0.5% BSA and 0.02% sodium azide.
Source	Polyclonal, Rabbit,IgG
Purification	The antibody was affinity-purified from rabbit serum by affinity-chromatography using specific immunogen.
Dilution	WB 1: 500-2000
Concentration	1 mg/ml
Purity	≥90%
Storage Stability	-20°C/1 year
Synonyms	
Observed Band	
Cell Pathway	Secreted .
Tissue Specificity	
Function	similarity:Belongs to the peptidase S1 family.,similarity:Contains 1 peptidase S1 domain.,
Background	
matters needing attention	Avoid repeated freezing and thawing!
Usage suggestions	This product can be used in immunological reaction related experiments. For more information, please consult technical personnel.

Nanjing BYabscience technology Co.,Ltd



Products Images



Western blot analysis of lysates from MDA-MB cells,
primary antibody was diluted at 1:1000, 4° over night