



LAMP5 rabbit pAb

Catalog No	BYab-08784
Isotype	IgG
Reactivity	Human; Mouse;Rat
Applications	WB
Gene Name	LAMP5 C20orf103
Protein Name	LAMP5
Immunogen	Synthesized peptide derived from human LAMP5 AA range: 143-193
Specificity	This antibody detects endogenous levels of LAMP5 at Human/Mouse/Rat
Formulation	Liquid in PBS containing 50% glycerol, 0.5% BSA and 0.02% sodium azide.
Source	Polyclonal, Rabbit,IgG
Purification	The antibody was affinity-purified from rabbit serum by affinity-chromatography using specific immunogen.
Dilution	WB 1: 500-2000
Concentration	1 mg/ml
Purity	≥90%
Storage Stability	-20°C/1 year
Synonyms	
Observed Band	
Cell Pathway	Cell membrane ; Single-pass type I membrane protein . Cytoplasmic vesicle, secretory vesicle, synaptic vesicle membrane ; Single-pass type I membrane protein . Endoplasmic reticulum-Golgi intermediate compartment membrane ; Single-pass type I membrane protein . Endosome membrane ; Single-pass type I membrane protein . Cytoplasmic vesicle membrane ; Single-pass type I membrane protein . Cell projection, dendrite . Cell projection, growth cone membrane ; Single-pass type I membrane protein . Early endosome membrane ; Single-pass type I membrane protein . Recycling endosome . Recycles from the vesicles of the endocytic recycling compartment (ERC) to the plasma membrane (By similarity). Colocalizes with UNC93B1 in large endosomal intracellular vesicles (PubMed:21642595). Accumulates in the end
Tissue Specificity	Expressed in plasmacytoid dendritic cells. Expressed in suprabasal skin keratinocytes and squamous cells (at protein level). Expressed in the brain and weakly in spleen and skin. Expressed in plasmacytoid dendritic cells.
Function	similarity:Belongs to the LAMP family.,

Nanjing BYabscience technology Co.,Ltd



Background

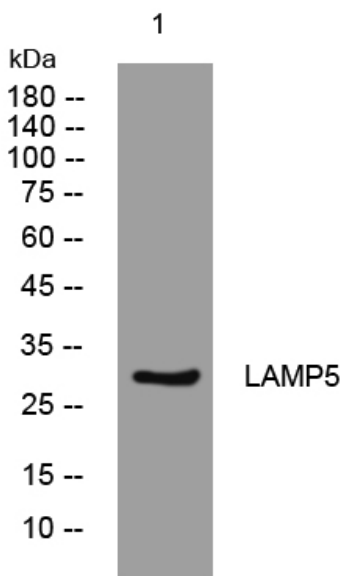
matters needing attention

Avoid repeated freezing and thawing!

Usage suggestions

This product can be used in immunological reaction related experiments. For more information, please consult technical personnel.

Products Images



Western blot analysis of lysates from SW480 cells, primary antibody was diluted at 1:1000, 4° over night