



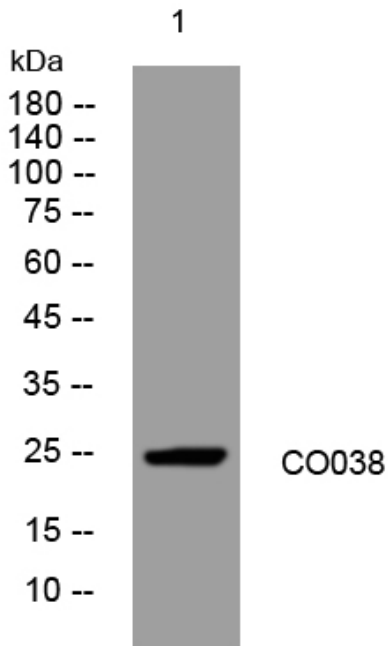
CO038 rabbit pAb

Catalog No	BYab-08779
Isotype	IgG
Reactivity	Human; Mouse
Applications	WB
Gene Name	C15orf38
Protein Name	CO038
Immunogen	Synthesized peptide derived from human CO038 AA range: 172-222
Specificity	This antibody detects endogenous levels of CO038 at Human/Mouse
Formulation	Liquid in PBS containing 50% glycerol, 0.5% BSA and 0.02% sodium azide.
Source	Polyclonal, Rabbit,IgG
Purification	The antibody was affinity-purified from rabbit serum by affinity-chromatography using specific immunogen.
Dilution	WB 1: 500-2000
Concentration	1 mg/ml
Purity	≥90%
Storage Stability	-20°C/1 year
Synonyms	
Observed Band	
Cell Pathway	Cell projection, lamellipodium . Colocalized with the WAVE complex at lamelliupodium tip. .
Tissue Specificity	
Function	similarity:Belongs to the UPF0552 family.,
Background	
matters needing attention	Avoid repeated freezing and thawing!
Usage suggestions	This product can be used in immunological reaction related experiments. For more information, please consult technical personnel.

Nanjing BYabscience technology Co.,Ltd



Products Images



Western blot analysis of lysates from SH-SY5Y cells,
primary antibody was diluted at 1:1000, 4° over night