



# TTC5 rabbit pAb

<b>Catalog No</b>	BYab-08777
<b>Isotype</b>	IgG
<b>Reactivity</b>	Human; Mouse;Rat
<b>Applications</b>	WB
<b>Gene Name</b>	TTC5
<b>Protein Name</b>	TTC5
<b>Immunogen</b>	Synthesized peptide derived from human TTC5 AA range: 82-132
<b>Specificity</b>	This antibody detects endogenous levels of TTC5 at Human/Mouse/Rat
<b>Formulation</b>	Liquid in PBS containing 50% glycerol, 0.5% BSA and 0.02% sodium azide.
<b>Source</b>	Polyclonal, Rabbit,IgG
<b>Purification</b>	The antibody was affinity-purified from rabbit serum by affinity-chromatography using specific immunogen.
<b>Dilution</b>	WB 1: 500-2000
<b>Concentration</b>	1 mg/ml
<b>Purity</b>	≥90%
<b>Storage Stability</b>	-20°C/1 year
<b>Synonyms</b>	
<b>Observed Band</b>	
<b>Cell Pathway</b>	Nucleus . Cytoplasm . Cytoplasmic vesicle . Mitochondrion matrix . Phosphorylation at Ser-203 results in nuclear localization, while unphosphorylated protein localizes to the cytoplasm. Nuclear localization may be necessary for DNA damage-dependent stabilization of the protein. .
<b>Tissue Specificity</b>	
<b>Function</b>	function:Adapter protein involved in p53/TP53 response that acts by regulating and mediating the assembly of multi-protein complexes. Required to facilitate the interaction between JMY and p300/EP300 and increase p53/TP53-dependent transcription and apoptosis. Prevents p53/TP53 degradation by MDM2.,PTM:Phosphorylation at Ser-203 enhances protein stability, regulates nuclear accumulation and association with p300/EP300.,similarity:Contains 4 TPR repeats.,subcellular location:Phosphorylation at Ser-203 results in nuclear localization, while unphosphorylated protein localizes to the cytoplasm.,subunit:Interacts with JMY and p300/EP300.,

Nanjing BYabscience technology Co.,Ltd



## Background

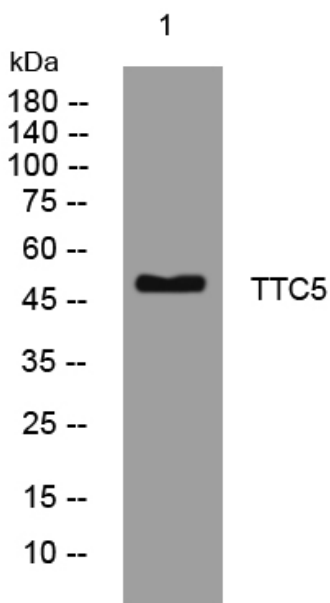
### matters needing attention

Avoid repeated freezing and thawing!

### Usage suggestions

This product can be used in immunological reaction related experiments. For more information, please consult technical personnel.

## Products Images



Western blot analysis of lysates from A431 cells, primary antibody was diluted at 1:1000, 4° over night