



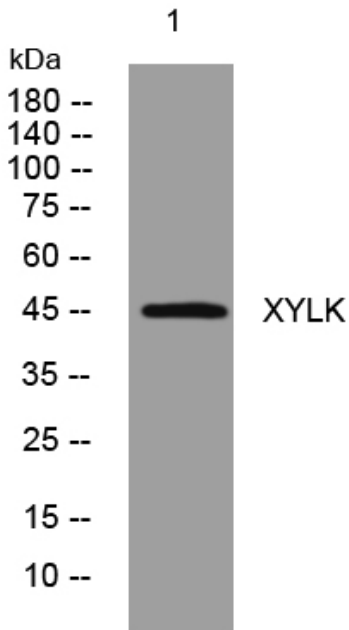
XYLK rabbit pAb

Catalog No	BYab-08774
Isotype	IgG
Reactivity	Human; Mouse
Applications	WB
Gene Name	FAM20B KIAA0475
Protein Name	XYLK
Immunogen	Synthesized peptide derived from human XYLK AA range: 121-171
Specificity	This antibody detects endogenous levels of XYLK at Human/Mouse
Formulation	Liquid in PBS containing 50% glycerol, 0.5% BSA and 0.02% sodium azide.
Source	Polyclonal, Rabbit,IgG
Purification	The antibody was affinity-purified from rabbit serum by affinity-chromatography using specific immunogen.
Dilution	WB 1: 500-2000
Concentration	1 mg/ml
Purity	≥90%
Storage Stability	-20°C/1 year
Synonyms	
Observed Band	
Cell Pathway	Golgi apparatus membrane ; Single-pass type II membrane protein .
Tissue Specificity	Widely expressed. Strongly expressed in pancreas, spleen and fetal liver.
Function	similarity:Belongs to the FAM20 family.,tissue specificity:Widely expressed.,
Background	
matters needing attention	Avoid repeated freezing and thawing!
Usage suggestions	This product can be used in immunological reaction related experiments. For more information, please consult technical personnel.

Nanjing BYabscience technology Co.,Ltd



Products Images



Western blot analysis of lysates from HeLa cells,
primary antibody was diluted at 1:1000, 4° over night