



# SC5AC rabbit pAb

<b>Catalog No</b>	BYab-08768
<b>Isotype</b>	IgG
<b>Reactivity</b>	Human; Mouse
<b>Applications</b>	WB
<b>Gene Name</b>	SLC5A12 SMCT2
<b>Protein Name</b>	SC5AC
<b>Immunogen</b>	Synthesized peptide derived from human SC5AC AA range: 84-134
<b>Specificity</b>	This antibody detects endogenous levels of SC5AC at Human/Mouse
<b>Formulation</b>	Liquid in PBS containing 50% glycerol, 0.5% BSA and 0.02% sodium azide.
<b>Source</b>	Polyclonal, Rabbit,IgG
<b>Purification</b>	The antibody was affinity-purified from rabbit serum by affinity-chromatography using specific immunogen.
<b>Dilution</b>	WB 1: 500-2000
<b>Concentration</b>	1 mg/ml
<b>Purity</b>	≥90%
<b>Storage Stability</b>	-20°C/1 year
<b>Synonyms</b>	
<b>Observed Band</b>	
<b>Cell Pathway</b>	Apical cell membrane ; Multi-pass membrane protein . Detected at the brush border membrane of the kidney. Colocalizes with viementin in Mueller cells (By similarity). .
<b>Tissue Specificity</b>	
<b>Function</b>	function:Acts as an electroneutral and low-affinity sodium (Na(+))-dependent sodium-coupled solute transporter. Catalyzes the transport across the plasma membrane of many monocarboxylates such as lactate, pyruvate, nicotinate, propionate, butyrate and beta-D-hydroxybutyrate. May be responsible for the first step of reabsorption of monocarboxylates from the lumen of the proximal tubule of the kidney and the small intestine. May play also a role in monocarboxylates transport in the retina (By similarity). Mediates electroneutral uptake of lactate, with a stoichiometry of 2 Na(+) for each lactate.,miscellaneous:Cotransport of monocarboxylates and nicotinate strongly inhibited by ibuprofen, fenoprofen and ketoprofen.,similarity:Belongs to the sodium:solute symporter (SSF) (TC 2.A.21) family.,subcellular location:Detected at the brush border membrane of the kidney.

**Nanjing BYabscience technology Co.,Ltd**



Colocalizes with viementin

**Background**

Normal blood lactate is maintained at about 1.5 mM, and little filtered lactate is excreted in urine. Reabsorption of lactate is mediated by the low-affinity Na(+)-coupled lactate transporter SLC5A12 in the initial part of the proximal tubule and by the high-affinity Na(+)-coupled lactate transporter SLC5A8 (MIM 608044) in the distal proximal tubule (Gopal et al., 2007 [PubMed 17692818]).[supplied by OMIM, Dec 2008],

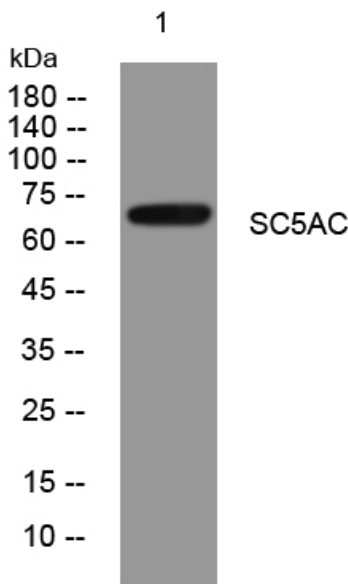
**matters needing attention**

Avoid repeated freezing and thawing!

**Usage suggestions**

This product can be used in immunological reaction related experiments. For more information, please consult technical personnel.

**Products Images**



Nanjing BYabscience technology Co.,Ltd