



# CCSAP rabbit pAb

<b>Catalog No</b>	BYab-08767
<b>Isotype</b>	IgG
<b>Reactivity</b>	Human; Mouse
<b>Applications</b>	WB
<b>Gene Name</b>	CCSAP C1orf96 CSAP
<b>Protein Name</b>	CCSAP
<b>Immunogen</b>	Synthesized peptide derived from human CCSAP AA range: 94-144
<b>Specificity</b>	This antibody detects endogenous levels of CCSAP at Human/Mouse
<b>Formulation</b>	Liquid in PBS containing 50% glycerol, 0.5% BSA and 0.02% sodium azide.
<b>Source</b>	Polyclonal, Rabbit,IgG
<b>Purification</b>	The antibody was affinity-purified from rabbit serum by affinity-chromatography using specific immunogen.
<b>Dilution</b>	WB 1: 500-2000
<b>Concentration</b>	1 mg/ml
<b>Purity</b>	≥90%
<b>Storage Stability</b>	-20°C/1 year
<b>Synonyms</b>	
<b>Observed Band</b>	
<b>Cell Pathway</b>	Cytoplasm, cytoskeleton, microtubule organizing center, centrosome, centriole . Cytoplasm, cytoskeleton, spindle . Cytoplasm, cytoskeleton . Cytoplasm, cytoskeleton, cilium basal body . Cytoplasm, cytoskeleton, cilium axoneme . Cell projection, axon . Cell projection, cilium . Cytoplasm, cytoskeleton, microtubule organizing center, centrosome . Localizes to two to four centrioles throughout the cell cycle. Localizes to mitotic spindle microtubules during prometaphase and throughout the remainder of mitosis. Localizes to cytoskeleton on interphase. Localizes at the ciliary transition zone which connects the basal bodies to ciliary microtubules. Colocalizes with polyglutamylated tubulin. .
<b>Tissue Specificity</b>	
<b>Function</b>	
<b>Background</b>	

Nanjing BYabscience technology Co.,Ltd



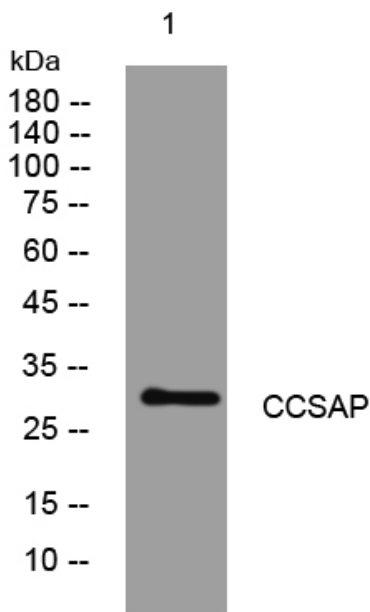
**matters needing attention**

Avoid repeated freezing and thawing!

**Usage suggestions**

This product can be used in immunological reaction related experiments. For more information, please consult technical personnel.

## Products Images



Western blot analysis of lysates from SH-SY5Y cells, primary antibody was diluted at 1:1000, 4° over night