



LAT1L rabbit pAb

| | |
|----------------------------------|--|
| Catalog No | BYab-08764 |
| Isotype | IgG |
| Reactivity | Human;Rat;Mouse; |
| Applications | WB |
| Gene Name | SLC7A5P2 IMAA MMAA |
| Protein Name | LAT1L |
| Immunogen | Synthesized peptide derived from human LAT1L AA range: 118-168 |
| Specificity | This antibody detects endogenous levels of LAT1L at Human |
| Formulation | Liquid in PBS containing 50% glycerol, 0.5% BSA and 0.02% sodium azide. |
| Source | Polyclonal, Rabbit,IgG |
| Purification | The antibody was affinity-purified from rabbit serum by affinity-chromatography using specific immunogen. |
| Dilution | WB 1: 500-2000 |
| Concentration | 1 mg/ml |
| Purity | ≥90% |
| Storage Stability | -20°C/1 year |
| Synonyms | |
| Observed Band | |
| Cell Pathway | Membrane ; Multi-pass membrane protein . |
| Tissue Specificity | Expressed in peripheral blood mononuclear cells and lymphoid and myeloid cell lines. |
| Function | caution:Could be the product of a pseudogene.,induction:Up-regulated by concanavilin-A stimulation.,similarity:Belongs to the amino acid-polyamine-organocation (APC) superfamily. L-type amino acid transporter (LAT) (TC 2.A.3.8) family.,tissue specificity:Expressed in peripheral blood mononuclear cells and lymphoid and myeloid cell lines., |
| Background | |
| matters needing attention | Avoid repeated freezing and thawing! |

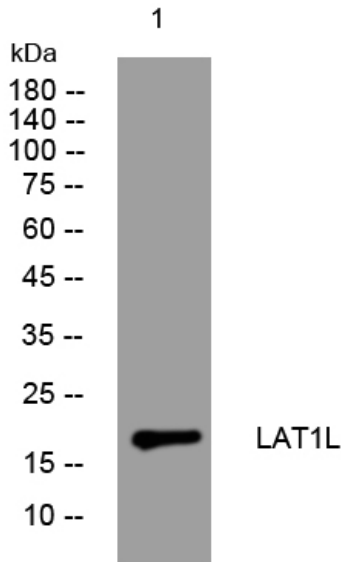
Nanjing BYabscience technology Co.,Ltd



Usage suggestions

This product can be used in immunological reaction related experiments. For more information, please consult technical personnel.

Products Images



Western blot analysis of lysates from VEC cells, primary antibody was diluted at 1:1000, 4° over night