



# HHLA2 rabbit pAb

<b>Catalog No</b>	BYab-08757
<b>Isotype</b>	IgG
<b>Reactivity</b>	Human;Rat;Mouse;
<b>Applications</b>	WB
<b>Gene Name</b>	HHLA2
<b>Protein Name</b>	HHLA2
<b>Immunogen</b>	Synthesized peptide derived from human HHLA2 AA range: 165-215
<b>Specificity</b>	This antibody detects endogenous levels of HHLA2 at Human
<b>Formulation</b>	Liquid in PBS containing 50% glycerol, 0.5% BSA and 0.02% sodium azide.
<b>Source</b>	Polyclonal, Rabbit,IgG
<b>Purification</b>	The antibody was affinity-purified from rabbit serum by affinity-chromatography using specific immunogen.
<b>Dilution</b>	WB 1: 500-2000
<b>Concentration</b>	1 mg/ml
<b>Purity</b>	≥90%
<b>Storage Stability</b>	-20°C/1 year
<b>Synonyms</b>	
<b>Observed Band</b>	
<b>Cell Pathway</b>	Membrane ; Single-pass type I membrane protein .
<b>Tissue Specificity</b>	Expressed at high levels in colon, kidney, testis, lung and pancreas, and at lower levels in small intestine, liver and skeletal muscle. In immune cells, highly expressed in B-cells, dendritic cells and macrophages. Not detected in T-cells.
<b>Function</b>	sequence caution:Translated as Trp.,similarity:Contains 1 Ig-like C1-type (immunoglobulin-like) domain.,similarity:Contains 2 Ig-like V-type (immunoglobulin-like) domains.,tissue specificity:Expressed in colon, small intestine, lung and kidney.,
<b>Background</b>	This gene encodes a protein ligand found on the surface of monocytes. The encoded protein is thought to regulate cell-mediated immunity by binding to a receptor on T lymphocytes and inhibiting the proliferation of these cells. Alternate splicing results in multiple transcript variants. [provided by RefSeq, Sep 2013],

Nanjing BYabscience technology Co.,Ltd



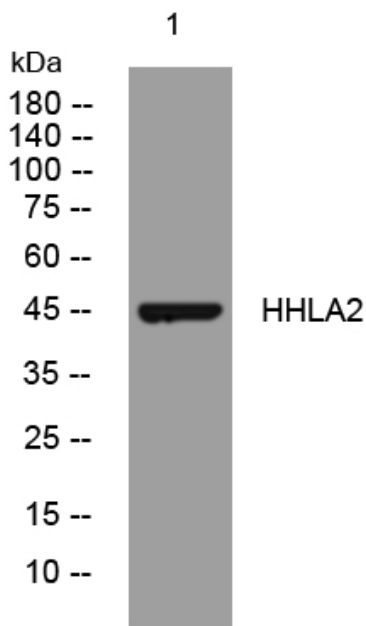
**matters needing attention**

Avoid repeated freezing and thawing!

**Usage suggestions**

This product can be used in immunological reaction related experiments. For more information, please consult technical personnel.

## Products Images



Western blot analysis of lysates from 293T cells, primary antibody was diluted at 1:1000, 4° over night