



YN3910

## PPAC2 rabbit pAb

<b>Catalog No</b>	BYab-08752
<b>Isotype</b>	IgG
<b>Reactivity</b>	Human; Mouse;Rat
<b>Applications</b>	WB
<b>Gene Name</b>	PPAPDC2
<b>Protein Name</b>	PPAC2
<b>Immunogen</b>	Synthesized peptide derived from human PPAC2 AA range: 145-195
<b>Specificity</b>	This antibody detects endogenous levels of PPAC2 at Human/Mouse/Rat
<b>Formulation</b>	Liquid in PBS containing 50% glycerol, 0.5% BSA and 0.02% sodium azide.
<b>Source</b>	Polyclonal, Rabbit,IgG
<b>Purification</b>	The antibody was affinity-purified from rabbit serum by affinity-chromatography using specific immunogen.
<b>Dilution</b>	WB 1: 500-2000
<b>Concentration</b>	1 mg/ml
<b>Purity</b>	≥90%
<b>Storage Stability</b>	-20°C/1 year
<b>Synonyms</b>	
<b>Observed Band</b>	
<b>Cell Pathway</b>	Endoplasmic reticulum membrane ; Multi-pass membrane protein . Nucleus envelope . Nucleus inner membrane .
<b>Tissue Specificity</b>	Widely expressed. Expressed in most organs, in particular gastrointestinal organs, spleen, placenta, kidney, thymus and brain.
<b>Function</b>	function:Phosphatase that dephosphorylates presqualene diphosphate (PSDP) into presqualene monophosphate (PSMP), suggesting that it may be indirectly involved in innate immunity. PSDP is a bioactive lipid that rapidly remodels to presqualene monophosphate PSMP upon cell activation. Displays diphosphate phosphatase activity with a substrate preference for PSDP > FDP > phosphatidic acid.,similarity:Belongs to the PA-phosphatase related phosphoesterase family.,tissue specificity:Widely expressed. Expressed in most organs, in

Nanjing BYabscience technology Co.,Ltd



particular gastrointestinal organs, spleen, placenta, kidney, thymus and brain.,

## Background

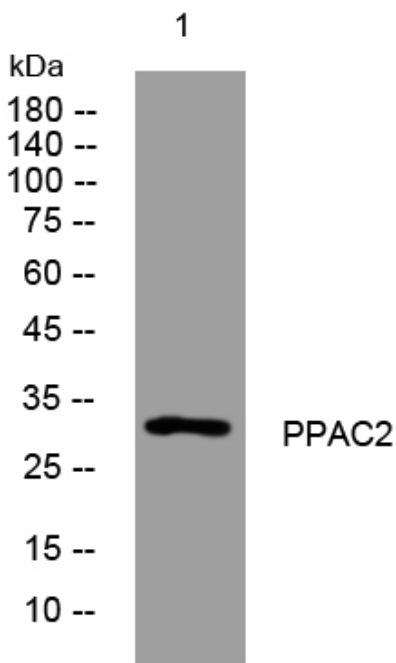
### matters needing attention

Avoid repeated freezing and thawing!

### Usage suggestions

This product can be used in immunological reaction related experiments. For more information, please consult technical personnel.

## Products Images



Western blot analysis of lysates from KB cells, primary antibody was diluted at 1:1000, 4° over night