



MB211 rabbit pAb

Catalog No	BYab-08744
Isotype	IgG
Reactivity	Human; Mouse
Applications	WB
Gene Name	MAB21L1 CAGR1 Nbla00126
Protein Name	MB211
Immunogen	Synthesized peptide derived from human MB211 AA range: 73-123
Specificity	This antibody detects endogenous levels of MB211 at Human/Mouse
Formulation	Liquid in PBS containing 50% glycerol, 0.5% BSA and 0.02% sodium azide.
Source	Polyclonal, Rabbit,IgG
Purification	The antibody was affinity-purified from rabbit serum by affinity-chromatography using specific immunogen.
Dilution	WB 1: 500-2000
Concentration	1 mg/ml
Purity	≥90%
Storage Stability	-20°C/1 year
Synonyms	
Observed Band	
Cell Pathway	Nucleus .
Tissue Specificity	Expressed in brain, cerebellum and skeletal muscle.
Function	function:Required for several aspects of embryonic development including normal development of the eye.,miscellaneous:A CAG trinucleotide repeat occurs in the 5'-UTR of this gene. This repeat has been found to be highly polymorphic, although expanded alleles have not yet been definitely linked with any phenotypic abnormality.,similarity:Belongs to the mab-21 family.,tissue specificity:Expressed in brain, cerebellum and skeletal muscle.,
Background	This gene is similar to the MAB-21 cell fate-determining gene found in <i>C. elegans</i> . It may be involved in eye and cerebellum development, and it has been proposed that expansion of a trinucleotide repeat region in the 5' UTR may play a role in a variety of psychiatric disorders. [provided by RefSeq, Oct 2008],

Nanjing BYabscience technology Co.,Ltd



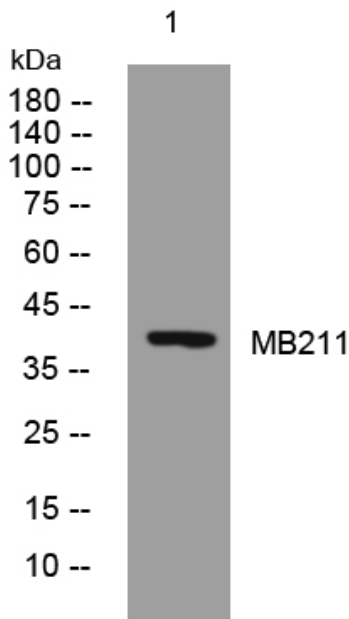
matters needing attention

Avoid repeated freezing and thawing!

Usage suggestions

This product can be used in immunological reaction related experiments. For more information, please consult technical personnel.

Products Images



Western blot analysis of lysates from CACO2 cells, primary antibody was diluted at 1:1000, 4° over night