



# BAGE1 rabbit pAb

<b>Catalog No</b>	BYab-08741
<b>Isotype</b>	IgG
<b>Reactivity</b>	Human;Rat;Mouse;
<b>Applications</b>	IHC;IF
<b>Gene Name</b>	BAGE BAGE1
<b>Protein Name</b>	BAGE1
<b>Immunogen</b>	Synthesized peptide derived from human BAGE1 AA range: 1-24
<b>Specificity</b>	This antibody detects endogenous levels of BAGE1 at Human
<b>Formulation</b>	Liquid in PBS containing 50% glycerol, 0.5% BSA and 0.02% sodium azide.
<b>Source</b>	Polyclonal, Rabbit,IgG
<b>Purification</b>	The antibody was affinity-purified from rabbit serum by affinity-chromatography using specific immunogen.
<b>Dilution</b>	IHC-p 1: 50-200. IF 1:50-200
<b>Concentration</b>	1 mg/ml
<b>Purity</b>	≥90%
<b>Storage Stability</b>	-20°C/1 year
<b>Synonyms</b>	
<b>Observed Band</b>	
<b>Cell Pathway</b>	Secreted .
<b>Tissue Specificity</b>	Not expressed in normal tissues, except in testis. Expressed with significant proportion in melanomas, but also in tumors of various histological origins, such as bladder carcinomas, head and neck squamous cell carcinomas, lung and breast carcinomas. Not expressed in renal, colorectal and prostatic carcinomas, leukemias and lymphomas. More frequently expressed in metastatic melanomas than in primary melanomas.
<b>Function</b>	alternative products:At least 6 different mRNAs, BAGE1a, BAGE1b, BAGE1c, BAGE1d, BAGE1e and BAGE1f, are produced by alternative splicing. They differ in the 3' region, but give rise to the same protein sequence,function:Unknown. Antigen recognized on a melanoma by autologous cytolytic T-lymphocytes.,miscellaneous:The ancestral BAGE gene was generated by juxtacentromeric reshuffling of the MLL3 gene. The BAGE family was expanded by juxtacentromeric movement and/or acrocentric exchanges. BAGE family is composed of expressed genes that map to the juxtacentromeric regions of

**Nanjing BYabscience technology Co.,Ltd**



chromosomes 13 and 21 and of unexpressed gene fragments that scattered in the juxtacentromeric regions of several chromosomes, including chromosomes 9, 13, 18 and 21.,similarity:Belongs to the BAGE family.,tissue specificity:Not expressed in normal tissues, except in testis. Expressed with significant proportion in melan

**Background**

This gene encodes a tumor antigen recognized by autologous cytolytic lymphocytes (CTL). [provided by RefSeq, Jul 2008],

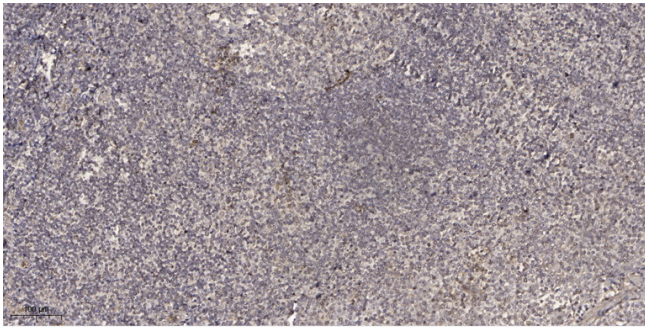
**matters needing attention**

Avoid repeated freezing and thawing!

**Usage suggestions**

This product can be used in immunological reaction related experiments. For more information, please consult technical personnel.

## Products Images



Immunohistochemical analysis of paraffin-embedded human tonsil. 1, Antibody was diluted at 1:200(4° overnight). 2, Tris-EDTA,pH9.0 was used for antigen retrieval. 3,Secondary antibody was diluted at 1:200(room temperature, 30min).