



# PPT2 rabbit pAb

<b>Catalog No</b>	BYab-08731
<b>Isotype</b>	IgG
<b>Reactivity</b>	Human; Mouse;Rat
<b>Applications</b>	WB
<b>Gene Name</b>	PPT2
<b>Protein Name</b>	PPT2
<b>Immunogen</b>	Synthesized peptide derived from human PPT2 AA range: 198-248
<b>Specificity</b>	This antibody detects endogenous levels of PPT2 at Human/Mouse/Rat
<b>Formulation</b>	Liquid in PBS containing 50% glycerol, 0.5% BSA and 0.02% sodium azide.
<b>Source</b>	Polyclonal, Rabbit,IgG
<b>Purification</b>	The antibody was affinity-purified from rabbit serum by affinity-chromatography using specific immunogen.
<b>Dilution</b>	WB 1: 500-2000
<b>Concentration</b>	1 mg/ml
<b>Purity</b>	≥90%
<b>Storage Stability</b>	-20°C/1 year
<b>Synonyms</b>	
<b>Observed Band</b>	
<b>Cell Pathway</b>	Lysosome .
<b>Tissue Specificity</b>	Broadly expressed, with highest levels in skeletal muscle.
<b>Function</b>	caution:Was originally (PubMed:9341199) referred as a palmitoyl-protein thioesterase (palmitoyl-protein hydrolase).,function:Removes thioester-linked fatty acyl groups from various substrates including S-palmitoyl-CoA. Has the highest S-thioesterase activity for the acyl groups palmitic and myristic acid followed by other short- and long-chain acyl substrates. However, because of structural constraints, is unable to remove palmitate from peptides or proteins.,similarity:Belongs to the palmitoyl-protein thioesterase family.,tissue specificity:Broadly expressed, with highest levels in skeletal muscle.,
<b>Background</b>	This gene encodes a member of the palmitoyl-protein thioesterase family. The encoded glycosylated lysosomal protein has palmitoyl-CoA hydrolase activity in vitro, but does not hydrolyze palmitate from cysteine residues in proteins.

Nanjing BYabscience technology Co.,Ltd



Alternative splicing results in multiple transcript variants. Read-through transcription also exists between this gene and the downstream EGFL8 (EGF-like-domain, multiple 8) gene. [provided by RefSeq, Feb 2011],

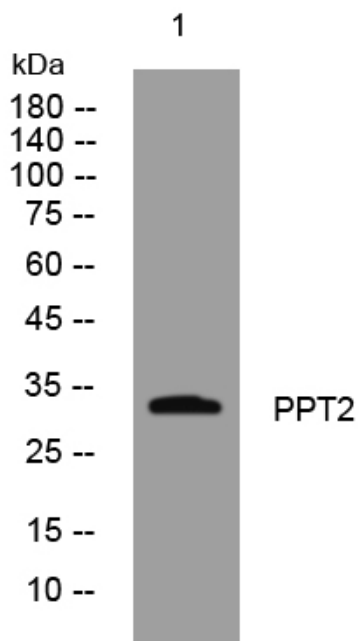
**matters needing attention**

Avoid repeated freezing and thawing!

**Usage suggestions**

This product can be used in immunological reaction related experiments. For more information, please consult technical personnel.

**Products Images**



Western blot analysis of lysates from VEC cells, primary antibody was diluted at 1:1000, 4° over night