



IQCK rabbit pAb

Catalog No	BYab-08724
Isotype	IgG
Reactivity	Human;Rat;Mouse;
Applications	WB
Gene Name	IQCK
Protein Name	IQCK
Immunogen	Synthesized peptide derived from human IQCK AA range: 71-121
Specificity	This antibody detects endogenous levels of IQCK at Human
Formulation	Liquid in PBS containing 50% glycerol, 0.5% BSA and 0.02% sodium azide.
Source	Polyclonal, Rabbit,IgG
Purification	The antibody was affinity-purified from rabbit serum by affinity-chromatography using specific immunogen.
Dilution	WB 1: 500-2000
Concentration	1 mg/ml
Purity	≥90%
Storage Stability	-20°C/1 year
Synonyms	
Observed Band	
Cell Pathway	
Tissue Specificity	
Function	
Background	This gene belongs to the IQ motif-containing family of proteins. The IQ motif serves as a binding site for different EF-hand proteins such as calmodulin. This gene was identified as a potential candidate gene for obsessive-compulsive disorder in a genome-wide association study. Alternative splicing of this gene results in multiple transcript variants. [provided by RefSeq, Feb 2015],
matters needing attention	Avoid repeated freezing and thawing!

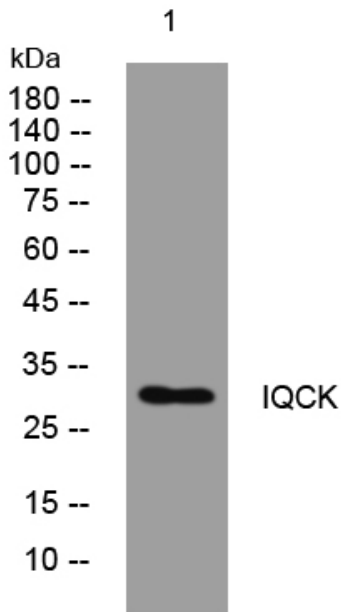
Nanjing BYabscience technology Co.,Ltd



Usage suggestions

This product can be used in immunological reaction related experiments. For more information, please consult technical personnel.

Products Images



Western blot analysis of lysates from KB cells, primary antibody was diluted at 1:1000, 4°over night