



# MPP4 rabbit pAb

<b>Catalog No</b>	BYab-08708
<b>Isotype</b>	IgG
<b>Reactivity</b>	Human; Mouse;Rat
<b>Applications</b>	WB
<b>Gene Name</b>	MPP4 ALS2CR5 DLG6
<b>Protein Name</b>	MPP4
<b>Immunogen</b>	Synthesized peptide derived from human MPP4 AA range: 388-438
<b>Specificity</b>	This antibody detects endogenous levels of MPP4 at Human/Mouse/Rat
<b>Formulation</b>	Liquid in PBS containing 50% glycerol, 0.5% BSA and 0.02% sodium azide.
<b>Source</b>	Polyclonal, Rabbit,IgG
<b>Purification</b>	The antibody was affinity-purified from rabbit serum by affinity-chromatography using specific immunogen.
<b>Dilution</b>	WB 1: 500-2000
<b>Concentration</b>	1 mg/ml
<b>Purity</b>	≥90%
<b>Storage Stability</b>	-20°C/1 year
<b>Synonyms</b>	
<b>Observed Band</b>	
<b>Cell Pathway</b>	Cytoplasm . Detected at the outer limiting membrane (OLM) and in the outer plexiform layer (OPL) of the retina. At the OLM, detected apical to the adherens junction (AJ).
<b>Tissue Specificity</b>	Expressed in the retina (at protein level). Highly expressed in the retina. Lower amounts are detected in brain, testis, ARPE-19, RPE/choroid and fetal eye. Isoform 5 is retina-specific.
<b>Function</b>	function:May play a role in retinal photoreceptors development.,similarity:Belongs to the MAGUK family.,similarity:Contains 1 guanylate kinase-like domain.,similarity:Contains 1 PDZ (DHR) domain.,similarity:Contains 1 SH3 domain.,similarity:Contains 2 L27 domains.,subcellular location:Detected at the outer limiting membrane (OLM) and in the outer plexiform layer (OPL) of the retina. At the OLM, detected apical to the adherens junction (AJ),subunit:Interacts with MPDZ. May interact with GRIA2 (By similarity). Forms a complex with CRB1 and MPP5.,tissue specificity:Expressed in the retina (at protein level). Highly expressed in the retina. Lower amounts are detected in

Nanjing BYabscience technology Co.,Ltd



brain, testis, ARPE-19, RPE/choroid and fetal eye. Isoform 5 is retina-specific.,

**Background**

This gene encodes a member of the membrane-associated guanylate kinase (MAGUK) protein family, with an N-terminal PDZ domain, a central src homology 3 region (SH3), and a C-terminal guanylate kinase-like (GUK) domain. The protein is localized to the outer limiting membrane in the retina, and is thought to function in photoreceptor polarity and the organization of specialized intercellular junctions. Alternatively spliced transcript variants have been described, but their biological validity has not been determined. [provided by RefSeq, Jul 2008],

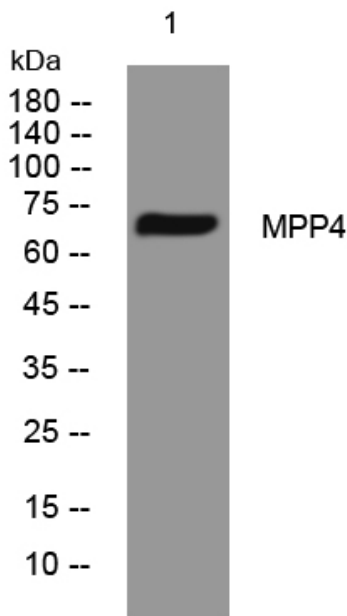
**matters needing attention**

Avoid repeated freezing and thawing!

**Usage suggestions**

This product can be used in immunological reaction related experiments. For more information, please consult technical personnel.

**Products Images**



Western blot analysis of lysates from Jarkat cells, primary antibody was diluted at 1:1000, 4° over night