



DPM3 rabbit pAb

Catalog No	BYab-08703
Isotype	IgG
Reactivity	Human; Mouse
Applications	IHC;IF
Gene Name	DPM3
Protein Name	DPM3
Immunogen	Synthesized peptide derived from human DPM3 AA range: 14-64
Specificity	This antibody detects endogenous levels of DPM3 at Human/Mouse
Formulation	Liquid in PBS containing 50% glycerol, 0.5% BSA and 0.02% sodium azide.
Source	Polyclonal, Rabbit,IgG
Purification	The antibody was affinity-purified from rabbit serum by affinity-chromatography using specific immunogen.
Dilution	IHC-p 1: 50-200. IF 1:50-200
Concentration	1 mg/ml
Purity	≥90%
Storage Stability	-20°C/1 year
Synonyms	
Observed Band	
Cell Pathway	Endoplasmic reticulum membrane; Multi-pass membrane protein.
Tissue Specificity	
Function	function:Stabilizer subunit of the dolichol-phosphate-mannose synthase complex.,online information:GlycoGene database,similarity:Belongs to the DPM3 family.,subunit:Composed of three subunits; DPM1, DPM2 and DPM3. Associated with DPM1 via its C-terminal domain and with DPM2 via its N-terminal portion.,
Background	Dolichol-phosphate mannose (Dol-P-Man) serves as a donor of mannosyl residues on the luminal side of the endoplasmic reticulum (ER). Lack of Dol-P-Man results in defective surface expression of GPI-anchored proteins. Dol-P-Man is synthesized from GDP-mannose and dolichol-phosphate on the cytosolic side of the ER by the enzyme dolichyl-phosphate mannosyltransferase. The protein encoded by this gene is a subunit of dolichyl-phosphate

Nanjing BYabscience technology Co.,Ltd



mannosyltransferase and acts as a stabilizer subunit of the dolichyl-phosphate mannosyltransferase complex. [provided by RefSeq, Jul 2008],

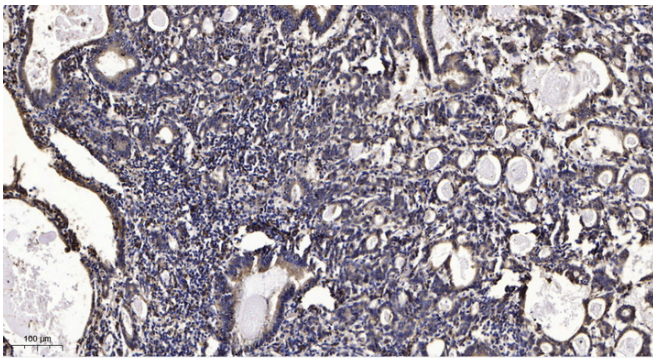
matters needing attention

Avoid repeated freezing and thawing!

Usage suggestions

This product can be used in immunological reaction related experiments. For more information, please consult technical personnel.

Products Images



Immunohistochemical analysis of paraffin-embedded human Gastric adenocarcinoma. 1, Antibody was diluted at 1:200(4° overnight). 2, Tris-EDTA,pH9.0 was used for antigen retrieval. 3,Secondary antibody was diluted at 1:200(room temperature, 45min).