



# MS4A3 rabbit pAb

<b>Catalog No</b>	BYab-08699
<b>Isotype</b>	IgG
<b>Reactivity</b>	Human; Mouse
<b>Applications</b>	WB
<b>Gene Name</b>	MS4A3 CD20L HTM4
<b>Protein Name</b>	MS4A3
<b>Immunogen</b>	Synthesized peptide derived from human MS4A3 AA range: 101-151
<b>Specificity</b>	This antibody detects endogenous levels of MS4A3 at Human/Mouse
<b>Formulation</b>	Liquid in PBS containing 50% glycerol, 0.5% BSA and 0.02% sodium azide.
<b>Source</b>	Polyclonal, Rabbit,IgG
<b>Purification</b>	The antibody was affinity-purified from rabbit serum by affinity-chromatography using specific immunogen.
<b>Dilution</b>	WB 1: 500-2000
<b>Concentration</b>	1 mg/ml
<b>Purity</b>	≥90%
<b>Storage Stability</b>	-20°C/1 year
<b>Synonyms</b>	
<b>Observed Band</b>	
<b>Cell Pathway</b>	Endomembrane system ; Multi-pass membrane protein . Cytoplasm, perinuclear region . Located in the perinuclear area.
<b>Tissue Specificity</b>	Expressed specifically in hematopoietic cells and tissues.
<b>Function</b>	caution:The sequence shown here is derived from an Ensembl automatic analysis pipeline and should be considered as preliminary data.,domain:The C-terminal region is required for binding to CDKN3-CDK2 complexes and the modulation of CDKN3 activity.,function:Hematopoietic modulator for the G1-S cell cycle transition. Modulates the level of phosphorylation of cyclin-dependent kinase 2 (CDK2) through its direct binding to cyclin-dependent kinase inhibitor 3 (CDKN3/KAP).,similarity:Belongs to the MS4A family.,subcellular location:Located in the perinuclear area.,subunit:Interacts with CDKN3. Interacts with CDKN3-CDK2 complexes through its binding to CDKN3; this interaction facilitates dissociation of cyclin A from CDKN3-CDK2 complexes.,tissue specificity:Expressed specifically in hematopoietic cells and tissues.,

Nanjing BYabscience technology Co.,Ltd



### Background

This gene encodes a member of the membrane-spanning 4A gene family. Members of this protein family are characterized by common structural features and similar intron/exon splice boundaries and display unique expression patterns among hematopoietic cells and nonlymphoid tissues. This family member likely plays a role in signal transduction and may function as a subunit associated with receptor complexes. The gene encoding this protein is localized to 11q12, among a cluster of related family members. Alternative splicing may result in multiple transcript variants; however, not all variants have been fully described. [provided by RefSeq, Jul 2008],

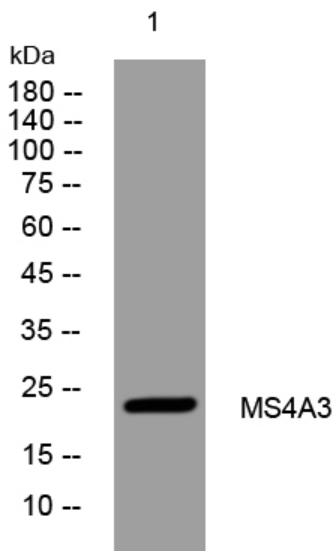
### matters needing attention

Avoid repeated freezing and thawing!

### Usage suggestions

This product can be used in immunological reaction related experiments. For more information, please consult technical personnel.

## Products Images



Western blot analysis of lysates from KB cells, primary antibody was diluted at 1:1000, 4° over night