



# PRAM1 rabbit pAb

<b>Catalog No</b>	BYab-08689
<b>Isotype</b>	IgG
<b>Reactivity</b>	Human;Rat;Mouse;
<b>Applications</b>	WB
<b>Gene Name</b>	PRAMEF1
<b>Protein Name</b>	PRAM1
<b>Immunogen</b>	Synthesized peptide derived from human PRAM1 AA range: 329-379
<b>Specificity</b>	This antibody detects endogenous levels of PRAM1 at Human
<b>Formulation</b>	Liquid in PBS containing 50% glycerol, 0.5% BSA and 0.02% sodium azide.
<b>Source</b>	Polyclonal, Rabbit,IgG
<b>Purification</b>	The antibody was affinity-purified from rabbit serum by affinity-chromatography using specific immunogen.
<b>Dilution</b>	WB 1: 500-2000
<b>Concentration</b>	1 mg/ml
<b>Purity</b>	≥90%
<b>Storage Stability</b>	-20°C/1 year
<b>Synonyms</b>	
<b>Observed Band</b>	
<b>Cell Pathway</b>	
<b>Tissue Specificity</b>	
<b>Function</b>	similarity:Belongs to the PRAME family.,similarity:Contains 3 LRR (leucine-rich) repeats.,
<b>Background</b>	This gene is a member of the PRAME (preferentially expressed antigen of melanoma) gene family which is expressed in many cancers but may function in reproductive tissues during development. Alternative promoter usage generates two transcript variants, which encode different isoforms. [provided by RefSeq, Jun 2014],
<b>matters needing attention</b>	Avoid repeated freezing and thawing!

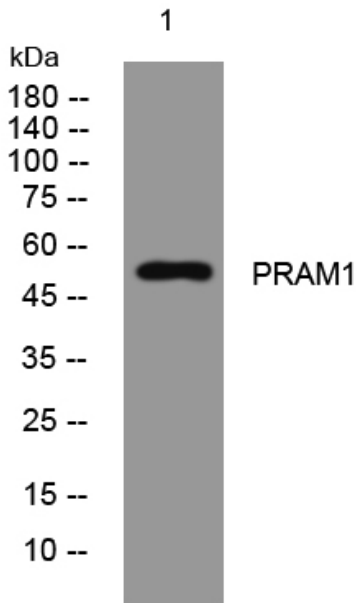
Nanjing BYabscience technology Co.,Ltd



**Usage suggestions**

This product can be used in immunological reaction related experiments. For more information, please consult technical personnel.

**Products Images**



Western blot analysis of lysates from A431 cells, primary antibody was diluted at 1:1000, 4° over night