



KLK10 rabbit pAb

Catalog No	BYab-08667
Isotype	IgG
Reactivity	Human;Rat
Applications	WB
Gene Name	KLK10 NES1 PRSSL1
Protein Name	KLK10
Immunogen	Synthesized peptide derived from human KLK10 AA range: 199-249
Specificity	This antibody detects endogenous levels of KLK10 at Human/Rat
Formulation	Liquid in PBS containing 50% glycerol, 0.5% BSA and 0.02% sodium azide.
Source	Polyclonal, Rabbit,IgG
Purification	The antibody was affinity-purified from rabbit serum by affinity-chromatography using specific immunogen.
Dilution	WB 1: 500-2000
Concentration	1 mg/ml
Purity	≥90%
Storage Stability	-20°C/1 year
Synonyms	
Observed Band	
Cell Pathway	Secreted .
Tissue Specificity	Expressed in breast, ovary and prostate.
Function	developmental stage:Down-regulated during breast cancer progression.,function:Has a tumor-suppressor role for NES1 in breast and prostate cancer.,similarity:Belongs to the peptidase S1 family.,similarity:Belongs to the peptidase S1 family. Kallikrein subfamily.,similarity:Contains 1 peptidase S1 domain.,tissue specificity:Expressed in breast, ovary and prostate.,
Background	Kallikreins are a subgroup of serine proteases having diverse physiological functions. Growing evidence suggests that many kallikreins are implicated in carcinogenesis and some have potential as novel cancer and other disease biomarkers. This gene is one of the fifteen kallikrein subfamily members located in a cluster on chromosome 19. Its encoded protein is secreted and may play a role in suppression of tumorigenesis in breast and prostate cancers. Alternate splicing

Nanjing BYabscience technology Co.,Ltd



of this gene results in multiple transcript variants encoding the same protein. [provided by RefSeq, Jul 2008],

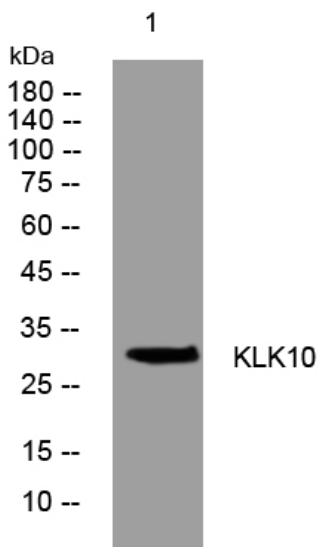
matters needing attention

Avoid repeated freezing and thawing!

Usage suggestions

This product can be used in immunological reaction related experiments. For more information, please consult technical personnel.

Products Images



Western blot analysis of lysates from PC-12 cells, primary antibody was diluted at 1:1000, 4° over night