



FLVC2 rabbit pAb

Catalog No	BYab-08662
Isotype	IgG
Reactivity	Human; Mouse;Rat
Applications	WB
Gene Name	FLVCR2 C14orf58
Protein Name	FLVC2
Immunogen	Synthesized peptide derived from human FLVC2 AA range: 352-402
Specificity	This antibody detects endogenous levels of FLVC2 at Human/Mouse/Rat
Formulation	Liquid in PBS containing 50% glycerol, 0.5% BSA and 0.02% sodium azide.
Source	Polyclonal, Rabbit,IgG
Purification	The antibody was affinity-purified from rabbit serum by affinity-chromatography using specific immunogen.
Dilution	WB 1: 500-2000
Concentration	1 mg/ml
Purity	≥90%
Storage Stability	-20°C/1 year
Synonyms	
Observed Band	
Cell Pathway	Cell membrane; Multi-pass membrane protein.
Tissue Specificity	Expressed in non-hematopoietic tissues, with relative abundant expression in brain, placenta, lung, liver and kidney. Also expressed in hematopoietic tissues (fetal liver, spleen, lymph node, thymus, leukocytes and bone marrow). Found in acidophil cells of the pituitary that secrete growth hormone and prolactin.
Function	function:Transporter specific for a calcium-chelator complex, important for growth and calcium metabolism.,similarity:Belongs to the major facilitator superfamily. Feline leukemia virus subgroup C receptor (TC 2.A.1.28.1) family.,tissue specificity:Found in acidophil cells of the pituitary that secrete growth hormone and prolactin.,
Background	This gene encodes a member of the major facilitator superfamily. The encoded transmembrane protein is a calcium transporter. Unlike the related protein feline leukemia virus subgroup C receptor 1, the protein encoded by this locus does not bind to feline leukemia virus subgroup C envelope protein. The encoded protein

Nanjing BYabscience technology Co.,Ltd



may play a role in development of brain vascular endothelial cells, as mutations at this locus have been associated with proliferative vasculopathy and hydranencephaly-hydrocephaly syndrome. Alternatively spliced transcript variants have been described.[provided by RefSeq, Aug 2010],

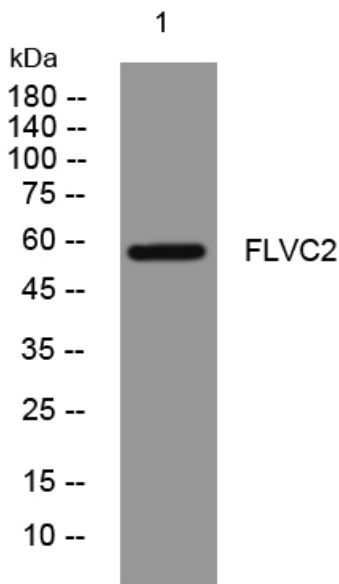
matters needing attention

Avoid repeated freezing and thawing!

Usage suggestions

This product can be used in immunological reaction related experiments. For more information, please consult technical personnel.

Products Images



Western blot analysis of lysates from MDA-MB cells, primary antibody was diluted at 1:1000, 4° over night