



ABT1 rabbit pAb

Catalog No	BYab-08660
Isotype	IgG
Reactivity	Human; Mouse;Rat
Applications	WB
Gene Name	ABT1
Protein Name	ABT1
Immunogen	Synthesized peptide derived from human ABT1 AA range: 140-190
Specificity	This antibody detects endogenous levels of ABT1 at Human/Mouse/Rat
Formulation	Liquid in PBS containing 50% glycerol, 0.5% BSA and 0.02% sodium azide.
Source	Polyclonal, Rabbit,IgG
Purification	The antibody was affinity-purified from rabbit serum by affinity-chromatography using specific immunogen.
Dilution	WB 1: 500-2000
Concentration	1 mg/ml
Purity	≥90%
Storage Stability	-20°C/1 year
Synonyms	
Observed Band	
Cell Pathway	Nucleus . Nucleus, nucleolus .
Tissue Specificity	
Function	function:Could be a novel TATA-binding protein (TBP) which can function as a basal transcription activator. Can act as a regulator of basal transcription for class II genes.,similarity:Belongs to the ESF2/ABP1 family.,similarity:Contains 1 RRM (RNA recognition motif) domain.,subunit:Interacts with ESF1/ABTAP.,
Background	Basal transcription of genes by RNA polymerase II requires the interaction of TATA-binding protein (TBP) with the core region of class II promoters. Studies in mouse suggest that the protein encoded by this gene likely activates basal transcription from class II promoters by interaction with TBP and the class II promoter DNA. [provided by RefSeq, Jul 2008],

Nanjing BYabscience technology Co.,Ltd



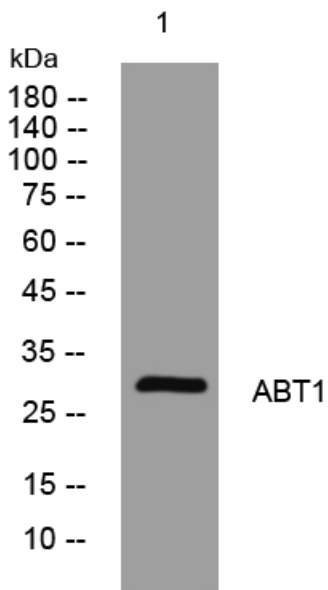
matters needing attention

Avoid repeated freezing and thawing!

Usage suggestions

This product can be used in immunological reaction related experiments. For more information, please consult technical personnel.

Products Images



Western blot analysis of lysates from U2OS cells, primary antibody was diluted at 1:1000, 4° over night