



# LCE1F rabbit pAb

<b>Catalog No</b>	BYab-08656
<b>Isotype</b>	IgG
<b>Reactivity</b>	Human;Rat;Mouse;
<b>Applications</b>	WB
<b>Gene Name</b>	LCE1F LEP6
<b>Protein Name</b>	LCE1F
<b>Immunogen</b>	Synthesized peptide derived from human LCE1F AA range: 22-72
<b>Specificity</b>	This antibody detects endogenous levels of LCE1F at Human
<b>Formulation</b>	Liquid in PBS containing 50% glycerol, 0.5% BSA and 0.02% sodium azide.
<b>Source</b>	Polyclonal, Rabbit,IgG
<b>Purification</b>	The antibody was affinity-purified from rabbit serum by affinity-chromatography using specific immunogen.
<b>Dilution</b>	WB 1: 500-2000
<b>Concentration</b>	1 mg/ml
<b>Purity</b>	≥90%
<b>Storage Stability</b>	-20°C/1 year
<b>Synonyms</b>	
<b>Observed Band</b>	
<b>Cell Pathway</b>	cornified envelope,cytoplasm,
<b>Tissue Specificity</b>	Skin-specific. Expression was readily detected in adult trunk skin, adult arm skin, fetal skin, penal skin, vulva, esophagus and tongue. Not expressed in the cervix, rectum, lung, colon, or placenta. Expression is observed in the fibroblasts.
<b>Function</b>	function:Precursors of the cornified envelope of the stratum corneum.,induction:By UVB.,miscellaneous:Belongs to the LCE cluster present on 1q21.,similarity:Belongs to the LCE family.,tissue specificity:Skin-specific. Expression was readily detected in adult trunk skin, adult arm skin, fetal skin, penal skin, vulva, esophagus and tongue. Not expressed in the cervix, rectum, lung, colon, or placenta. Expression is observed in the fibroblasts.,
<b>Background</b>	

Nanjing BYabscience technology Co.,Ltd



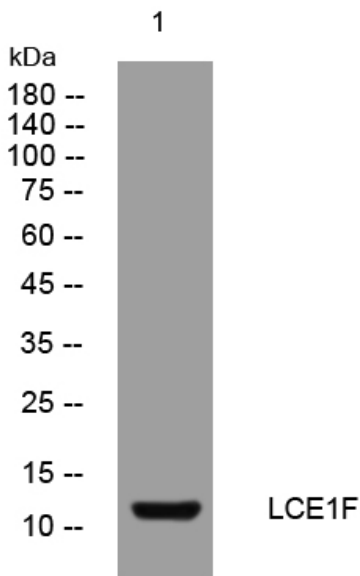
**matters needing attention**

Avoid repeated freezing and thawing!

**Usage suggestions**

This product can be used in immunological reaction related experiments. For more information, please consult technical personnel.

## Products Images



Nanjing BYabscience technology Co.,Ltd