



PIGU rabbit pAb

Catalog No	BYab-08649
Isotype	IgG
Reactivity	Human; Mouse;Rat
Applications	WB
Gene Name	PIGU CDC91L1 PSEC0205 UNQ3055/PRO9875
Protein Name	PIGU
Immunogen	Synthesized peptide derived from human PIGU AA range: 313-363
Specificity	This antibody detects endogenous levels of PIGU at Human/Mouse/Rat
Formulation	Liquid in PBS containing 50% glycerol, 0.5% BSA and 0.02% sodium azide.
Source	Polyclonal, Rabbit,IgG
Purification	The antibody was affinity-purified from rabbit serum by affinity-chromatography using specific immunogen.
Dilution	WB 1: 500-2000
Concentration	1 mg/ml
Purity	≥90%
Storage Stability	-20°C/1 year
Synonyms	
Observed Band	
Cell Pathway	Endoplasmic reticulum membrane ; Multi-pass membrane protein .
Tissue Specificity	
Function	function:Component of the GPI transamidase complex. May be involved in the recognition of either the GPI attachment signal or the lipid portion of GPI.,pathway:Glycolipid biosynthesis; glycosylphosphatidylinositol-anchor biosynthesis.,similarity:Belongs to the PIGU family.,subunit:Forms a complex with PIGK/GPI8, PIGS, PIGT and GPAA1/GAA1.,
Background	The protein encoded by this gene shares similarity with Saccharomyces cerevisiae Cdc91, a predicted integral membrane protein that may function in cell division control. The protein encoded by this gene is the fifth subunit of GPI transamidase that attaches GPI-anchors to proteins. [provided by RefSeq, Jul 2008],

Nanjing BYabscience technology Co.,Ltd



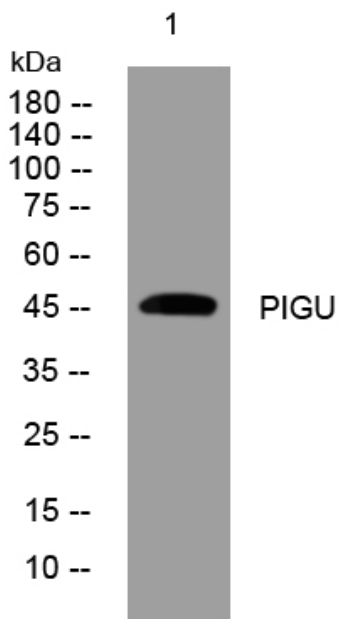
matters needing attention

Avoid repeated freezing and thawing!

Usage suggestions

This product can be used in immunological reaction related experiments. For more information, please consult technical personnel.

Products Images



Western blot analysis of lysates from Hela cells,
primary antibody was diluted at 1:1000, 4° over night