



VPS18 rabbit pAb

Catalog No	BYab-08648
Isotype	IgG
Reactivity	Human; Mouse
Applications	WB
Gene Name	VPS18 KIAA1475
Protein Name	VPS18
Immunogen	Synthesized peptide derived from human VPS18 AA range: 778-828
Specificity	This antibody detects endogenous levels of VPS18 at Human/Mouse
Formulation	Liquid in PBS containing 50% glycerol, 0.5% BSA and 0.02% sodium azide.
Source	Polyclonal, Rabbit,IgG
Purification	The antibody was affinity-purified from rabbit serum by affinity-chromatography using specific immunogen.
Dilution	WB 1: 500-2000
Concentration	1 mg/ml
Purity	≥90%
Storage Stability	-20°C/1 year
Synonyms	
Observed Band	
Cell Pathway	Late endosome membrane ; Peripheral membrane protein ; Cytoplasmic side . Lysosome membrane ; Peripheral membrane protein ; Cytoplasmic side . Early endosome . Cytoplasmic vesicle, autophagosome . Cytoplasmic vesicle, clathrin-coated vesicle . Cytoplasmic, peripheral membrane protein associated with early endosomes and late endosomes/lysosomes.
Tissue Specificity	Ubiquitous. Expression was highest in heart and low in lung.
Function	function:May play a role in vesicle-mediated protein trafficking to lysosomal compartments and in membrane docking/fusion reactions of late endosomes/lysosomes.,similarity:Belongs to the VPS18 family.,similarity:Contains 1 clathrin repeat.,similarity:Contains 1 RING-type zinc finger.,subcellular location:Cytoplasmic, peripheral membrane protein associated with late endosomes/lysosomes.,subunit:Interacts with HOOK1 (By similarity). Large hetero-oligomeric complex together with VPS11, VPS16 and VPS33A. Interacts with STX7.,tissue specificity:Ubiquitous. Expression was highest in heart and low in lung.,

Nanjing BYabscience technology Co.,Ltd



Background

Vesicle mediated protein sorting plays an important role in segregation of intracellular molecules into distinct organelles. Genetic studies in yeast have identified more than 40 vacuolar protein sorting (VPS) genes involved in vesicle transport to vacuoles. This gene encodes the human homolog of yeast class C Vps18 protein. The mammalian class C Vps proteins are predominantly associated with late endosomes/lysosomes, and like their yeast counterparts, may mediate vesicle trafficking steps in the endosome/lysosome pathway. [provided by RefSeq, Jul 2008],

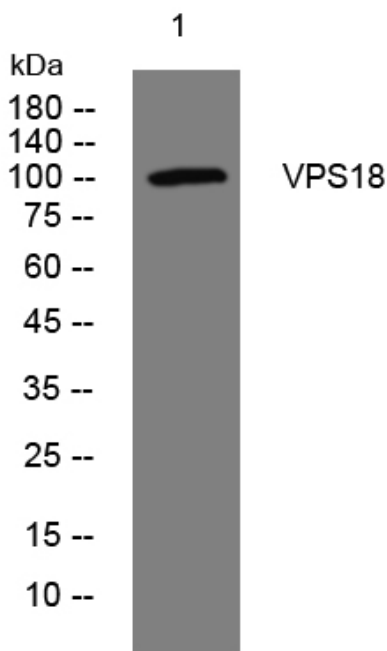
matters needing attention

Avoid repeated freezing and thawing!

Usage suggestions

This product can be used in immunological reaction related experiments. For more information, please consult technical personnel.

Products Images



Western blot analysis of lysates from DU145 cells, primary antibody was diluted at 1:1000, 4° over night