



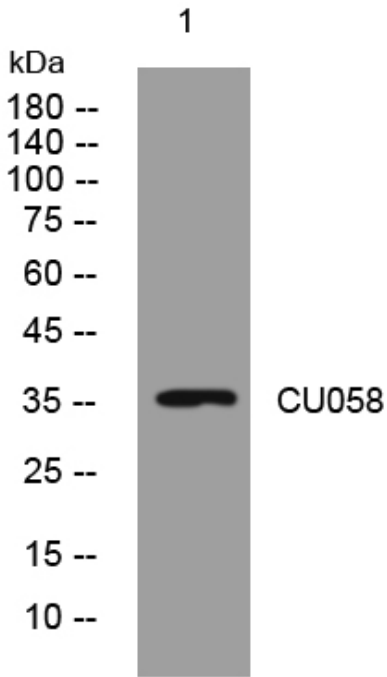
CU058 rabbit pAb

Catalog No	BYab-08627
Isotype	IgG
Reactivity	Human;Rat;Mouse;
Applications	WB
Gene Name	C21orf58
Protein Name	CU058
Immunogen	Synthesized peptide derived from human CU058 AA range: 13-63
Specificity	This antibody detects endogenous levels of CU058 at Human
Formulation	Liquid in PBS containing 50% glycerol, 0.5% BSA and 0.02% sodium azide.
Source	Polyclonal, Rabbit,IgG
Purification	The antibody was affinity-purified from rabbit serum by affinity-chromatography using specific immunogen.
Dilution	WB 1: 500-2000
Concentration	1 mg/ml
Purity	≥90%
Storage Stability	-20°C/1 year
Synonyms	
Observed Band	
Cell Pathway	
Tissue Specificity	Expressed in skin and fetal lung.
Function	tissue specificity:Expressed in skin and fetal lung.,
Background	
matters needing attention	Avoid repeated freezing and thawing!
Usage suggestions	This product can be used in immunological reaction related experiments. For more information, please consult technical personnel.

Nanjing BYabscience technology Co.,Ltd



Products Images



Western blot analysis of lysates from Jarkat cells,
primary antibody was diluted at 1:1000, 4° over night