



S15A3 rabbit pAb

Catalog No	BYab-08620
Isotype	IgG
Reactivity	Human; Mouse;Rat
Applications	WB
Gene Name	SLC15A3 OCTP PHT2 PTR3
Protein Name	S15A3
Immunogen	Synthesized peptide derived from human S15A3 AA range: 375-425
Specificity	This antibody detects endogenous levels of S15A3 at Human/Mouse/Rat
Formulation	Liquid in PBS containing 50% glycerol, 0.5% BSA and 0.02% sodium azide.
Source	Polyclonal, Rabbit,IgG
Purification	The antibody was affinity-purified from rabbit serum by affinity-chromatography using specific immunogen.
Dilution	WB 1: 500-2000
Concentration	1 mg/ml
Purity	≥90%
Storage Stability	-20°C/1 year
Synonyms	
Observed Band	
Cell Pathway	Lysosome membrane ; Multi-pass membrane protein . Endosome membrane ; Multi-pass membrane protein .
Tissue Specificity	
Function	function:Proton oligopeptide cotransporter. Transports free histidine and certain di- and tripeptides.,similarity:Belongs to the PTR2/POT transporter (TC 2.A.17) family.,
Background	
matters needing attention	Avoid repeated freezing and thawing!

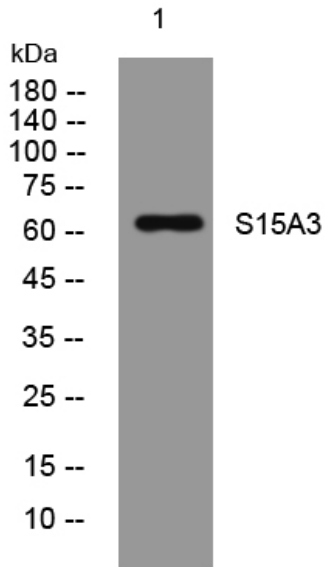
Nanjing BYabscience technology Co.,Ltd



Usage suggestions

This product can be used in immunological reaction related experiments. For more information, please consult technical personnel.

Products Images



Western blot analysis of lysates from 293T cells, primary antibody was diluted at 1:1000, 4° over night