



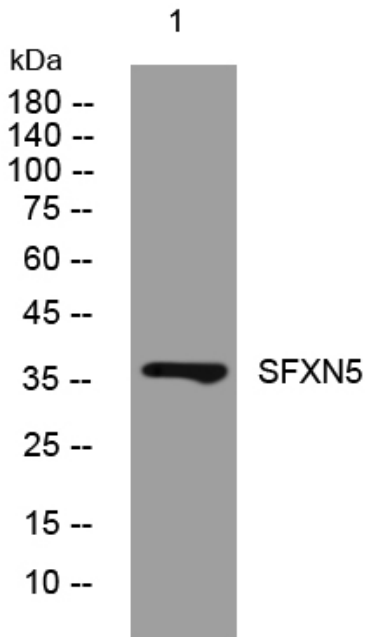
SFXN5 rabbit pAb

Catalog No	BYab-08615
Isotype	IgG
Reactivity	Human; Mouse;Rat
Applications	WB
Gene Name	SFXN5
Protein Name	SFXN5
Immunogen	Synthesized peptide derived from human SFXN5 AA range: 78-128
Specificity	This antibody detects endogenous levels of SFXN5 at Human/Mouse/Rat
Formulation	Liquid in PBS containing 50% glycerol, 0.5% BSA and 0.02% sodium azide.
Source	Polyclonal, Rabbit,IgG
Purification	The antibody was affinity-purified from rabbit serum by affinity-chromatography using specific immunogen.
Dilution	WB 1: 500-2000
Concentration	1 mg/ml
Purity	≥90%
Storage Stability	-20°C/1 year
Synonyms	
Observed Band	
Cell Pathway	Mitochondrion membrane ; Multi-pass membrane protein .
Tissue Specificity	Primarily expressed in the brain.
Function	function:Transports citrate. Potential iron transporter.,similarity:Belongs to the sideroflexin family.,tissue specificity:Primarily expressed in the brain.,
Background	
matters needing attention	Avoid repeated freezing and thawing!
Usage suggestions	This product can be used in immunological reaction related experiments. For more information, please consult technical personnel.

Nanjing BYabscience technology Co.,Ltd



Products Images



Western blot analysis of lysates from VEC cells,
primary antibody was diluted at 1:1000, 4° over night