



RBBP9 rabbit pAb

Catalog No	BYab-08606
Isotype	IgG
Reactivity	Human; Mouse;Rat
Applications	WB
Gene Name	RBBP9 BOG RBBP10
Protein Name	RBBP9
Immunogen	Synthesized peptide derived from human RBBP9 AA range: 108-158
Specificity	This antibody detects endogenous levels of RBBP9 at Human/Mouse/Rat
Formulation	Liquid in PBS containing 50% glycerol, 0.5% BSA and 0.02% sodium azide.
Source	Polyclonal, Rabbit,IgG
Purification	The antibody was affinity-purified from rabbit serum by affinity-chromatography using specific immunogen.
Dilution	WB 1: 500-2000
Concentration	1 mg/ml
Purity	≥90%
Storage Stability	-20°C/1 year
Synonyms	
Observed Band	
Cell Pathway	nucleus,nucleolus,cytoplasm,extracellular exosome,
Tissue Specificity	Expressed at higher levels in tumor tissues such as carcinoma.
Function	function:May play a role in the transformation process due to its capacity to confer resistance to the growth-inhibitory effects of TGF-beta1 through interaction with retinoblastoma and the subsequent displacement of E2F-1.,similarity:Belongs to the RBBP9 family.,tissue specificity:Widely expressed. Expressed at higher levels in tumor tissues than in normal tissues.,
Background	The protein encoded by this gene is a retinoblastoma binding protein that may play a role in the regulation of cell proliferation and differentiation. Two alternatively spliced transcript variants of this gene with identical predicted protein products have been reported, one of which is a nonsense-mediated decay candidate. [provided by RefSeq, Jul 2008],

Nanjing BYabscience technology Co.,Ltd



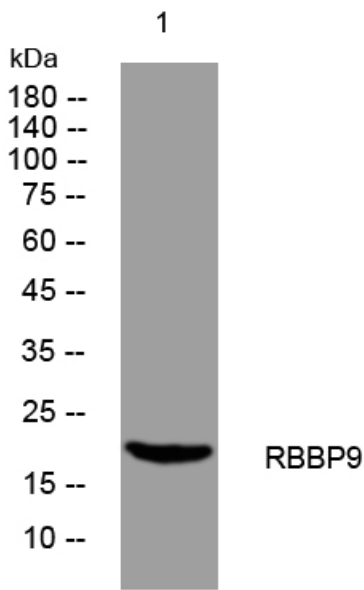
matters needing attention

Avoid repeated freezing and thawing!

Usage suggestions

This product can be used in immunological reaction related experiments. For more information, please consult technical personnel.

Products Images



Western blot analysis of lysates from U2OS cells, primary antibody was diluted at 1:1000, 4° over night