



# LCE2B rabbit pAb

<b>Catalog No</b>	BYab-08603
<b>Isotype</b>	IgG
<b>Reactivity</b>	Human;Rat;Mouse;
<b>Applications</b>	WB
<b>Gene Name</b>	LCE2B LEP10 SPRL1B XP5
<b>Protein Name</b>	LCE2B
<b>Immunogen</b>	Synthesized peptide derived from human LCE2B AA range: 31-81
<b>Specificity</b>	This antibody detects endogenous levels of LCE2B at Human
<b>Formulation</b>	Liquid in PBS containing 50% glycerol, 0.5% BSA and 0.02% sodium azide.
<b>Source</b>	Polyclonal, Rabbit,IgG
<b>Purification</b>	The antibody was affinity-purified from rabbit serum by affinity-chromatography using specific immunogen.
<b>Dilution</b>	WB 1: 500-2000
<b>Concentration</b>	1 mg/ml
<b>Purity</b>	≥90%
<b>Storage Stability</b>	-20°C/1 year
<b>Synonyms</b>	
<b>Observed Band</b>	
<b>Cell Pathway</b>	cornified envelope,cytoplasm,
<b>Tissue Specificity</b>	Skin-specific. Expression was readily detected in adult trunk skin, adult arm skin, fetal skin, penal skin, vulva, esophagus and tongue. Not expressed in the cervix, rectum, lung, colon, or placenta.
<b>Function</b>	function:Precursors of the cornified envelope of the stratum corneum.,induction:By calcium and UVB.,miscellaneous:Belongs to the LCE cluster present on 1q21.,similarity:Belongs to the LCE family.,tissue specificity:Skin-specific. Expression was readily detected in adult trunk skin, adult arm skin, fetal skin, penal skin, vulva, esophagus and tongue. Not expressed in the cervix, rectum, lung, colon, or placenta.,
<b>Background</b>	This gene is one of the at least 20 genes expressed during epidermal differentiation and located on chromosomal band 1q21. This gene is involved in epidermal differentiation, and it is expressed at high levels in normal and psoriatic skin, but not in cultured keratinocytes or in any other tested cell types or tissues.

**Nanjing BYabscience technology Co.,Ltd**



[provided by RefSeq, Jul 2008],

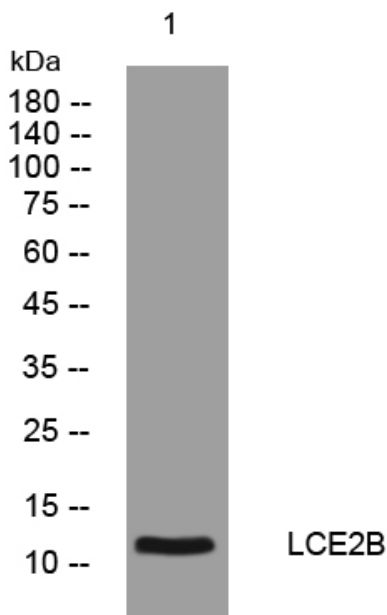
**matters needing attention**

Avoid repeated freezing and thawing!

**Usage suggestions**

This product can be used in immunological reaction related experiments. For more information, please consult technical personnel.

## Products Images



Western blot analysis of lysates from MCF-7 cells, primary antibody was diluted at 1:1000, 4° over night