



# DCTN3 rabbit pAb

<b>Catalog No</b>	BYab-08599
<b>Isotype</b>	IgG
<b>Reactivity</b>	Human; Mouse
<b>Applications</b>	WB
<b>Gene Name</b>	DCTN3 DCTN22
<b>Protein Name</b>	DCTN3
<b>Immunogen</b>	Synthesized peptide derived from human DCTN3 AA range: 117-167
<b>Specificity</b>	This antibody detects endogenous levels of DCTN3 at Human/Mouse
<b>Formulation</b>	Liquid in PBS containing 50% glycerol, 0.5% BSA and 0.02% sodium azide.
<b>Source</b>	Polyclonal, Rabbit,IgG
<b>Purification</b>	The antibody was affinity-purified from rabbit serum by affinity-chromatography using specific immunogen.
<b>Dilution</b>	WB 1: 500-2000
<b>Concentration</b>	1 mg/ml
<b>Purity</b>	≥90%
<b>Storage Stability</b>	-20°C/1 year
<b>Synonyms</b>	
<b>Observed Band</b>	
<b>Cell Pathway</b>	Cytoplasm . Cytoplasm, cytoskeleton, microtubule organizing center, centrosome . Chromosome, centromere, kinetochore . Cytoplasm, cytoskeleton, spindle . Cleavage furrow . Midbody . Localizes to punctate cytoplasmic structures and to the centrosome during interphase, and to kinetochores and to spindle poles throughout mitosis. Colocalizes with dynein to the cleavage furrow and to midbody of dividing cells.
<b>Tissue Specificity</b>	Ubiquitously expressed. Highly expressed in muscle and pancreas and detected at lower levels in brain.
<b>Function</b>	function:Together with dynein may be involved in spindle assembly and cytokinesis.,similarity:Belongs to the dynactin subunit 3 family.,subcellular location:Localizes to punctate cytoplasmic structures and to the centrosome during interphase, and to kinetochores and to spindle poles throughout mitosis. Colocalizes with dynein to the cleavage furrow and to midbody of dividing cells.,subunit:Subunit of dynactin, a multiprotein complex associated with dynein.,tissue specificity:Ubiquitously expressed. Highly expressed in muscle and

Nanjing BYabscience technology Co.,Ltd



pancreas and detected at lower levels in brain.,

### Background

This gene encodes the smallest subunit of dynactin, a macromolecular complex consisting of 10 subunits ranging in size from 22 to 150 kD. Dynactin binds to both microtubules and cytoplasmic dynein. It is involved in a diverse array of cellular functions, including ER-to-Golgi transport, the centripetal movement of lysosomes and endosomes, spindle formation, cytokinesis, chromosome movement, nuclear positioning, and axonogenesis. This subunit, like most other dynactin subunits, exists only as a part of the dynactin complex. It is primarily an alpha-helical protein with very little coiled coil, and binds directly to the largest subunit (p150) of dynactin. Alternative splicing results in multiple transcript variants. [provided by RefSeq, Jul 2013],

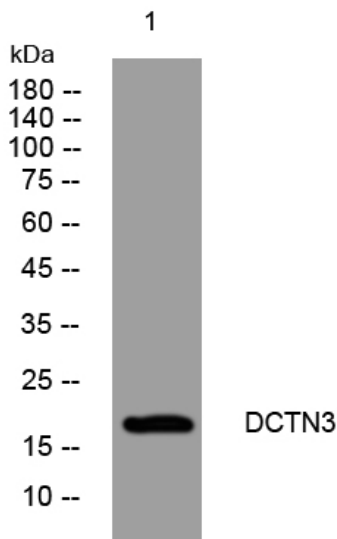
### matters needing attention

Avoid repeated freezing and thawing!

### Usage suggestions

This product can be used in immunological reaction related experiments. For more information, please consult technical personnel.

## Products Images



Western blot analysis of lysates from HuvEc cells, primary antibody was diluted at 1:1000, 4° over night