



RBSK rabbit pAb

Catalog No	BYab-08579
Isotype	IgG
Reactivity	Human; Mouse
Applications	WB
Gene Name	RBKS RBSK
Protein Name	RBSK
Immunogen	Synthesized peptide derived from human RBSK AA range: 168-218
Specificity	This antibody detects endogenous levels of RBSK at Human/Mouse
Formulation	Liquid in PBS containing 50% glycerol, 0.5% BSA and 0.02% sodium azide.
Source	Polyclonal, Rabbit,IgG
Purification	The antibody was affinity-purified from rabbit serum by affinity-chromatography using specific immunogen.
Dilution	WB 1: 500-2000
Concentration	1 mg/ml
Purity	≥90%
Storage Stability	-20°C/1 year
Synonyms	
Observed Band	
Cell Pathway	Cytoplasm . Nucleus .
Tissue Specificity	
Function	catalytic activity:ATP + D-ribose = ADP + D-ribose 5-phosphate.,enzyme regulation:Competitively inhibited by phosphonoacetic acid, etidronate, 2-carboxethylphosphonic acid, N-(phosphonomethyl)glycine, N-(phosphonomethyl)iminodiacetic acid and clodronate.,pathway:Carbohydrate metabolism; D-ribose degradation; D-ribose 5-phosphate from beta-D-ribopyranose: step 2/2.,similarity:Belongs to the carbohydrate kinase pfkB family.,
Background	This gene encodes a member of the carbohydrate kinase PfkB family. The encoded protein phosphorylates ribose to form ribose-5-phosphate in the presence of ATP and magnesium as a first step in ribose metabolism. Alternative splicing results in multiple transcript variants. [provided by RefSeq, Dec 2013],

Nanjing BYabscience technology Co.,Ltd



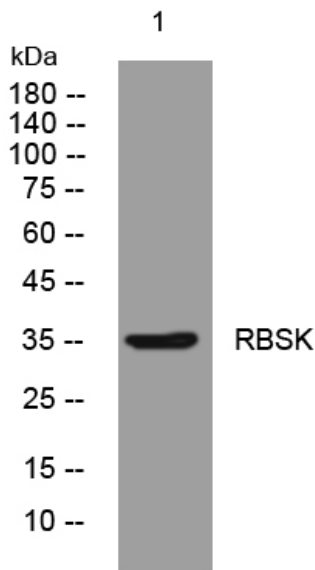
matters needing attention

Avoid repeated freezing and thawing!

Usage suggestions

This product can be used in immunological reaction related experiments. For more information, please consult technical personnel.

Products Images



Western blot analysis of lysates from HeLa cells, primary antibody was diluted at 1:1000, 4° over night