



# SAA2 rabbit pAb

<b>Catalog No</b>	BYab-08578
<b>Isotype</b>	IgG
<b>Reactivity</b>	Human; Mouse
<b>Applications</b>	WB
<b>Gene Name</b>	SAA2
<b>Protein Name</b>	SAA2
<b>Immunogen</b>	Synthesized peptide derived from human SAA2 AA range: 36-86
<b>Specificity</b>	This antibody detects endogenous levels of SAA2 at Human/Mouse
<b>Formulation</b>	Liquid in PBS containing 50% glycerol, 0.5% BSA and 0.02% sodium azide.
<b>Source</b>	Polyclonal, Rabbit,IgG
<b>Purification</b>	The antibody was affinity-purified from rabbit serum by affinity-chromatography using specific immunogen.
<b>Dilution</b>	WB 1: 500-2000
<b>Concentration</b>	1 mg/ml
<b>Purity</b>	≥90%
<b>Storage Stability</b>	-20°C/1 year
<b>Synonyms</b>	
<b>Observed Band</b>	
<b>Cell Pathway</b>	Secreted .
<b>Tissue Specificity</b>	Expressed by the liver; secreted in plasma.
<b>Function</b>	disease:BOL is from a patient with Waldenstrom macroglobulinemia.,disease:JL is from a patient with ankylosing spondylitis.,disease:Reactive, secondary amyloidosis is characterized by the extracellular accumulation in various tissues of the SAA protein. These deposits are highly insoluble and resistant to proteolysis; they disrupt tissue structure and compromise function.,disease:TH is from a patient with juvenile rheumatoid arthritis.,function:Major acute phase reactant. Apolipoprotein of the HDL complex.,induction:Upon cytokine stimulation.,mass spectrometry: PubMed:12606051,mass spectrometry: PubMed:12973732,mass spectrometry:With variant Ala-70 PubMed:1463770,mass spectrometry:With variants Ala-70, Val-75, Asn-78 and 86-Leu-Thr-87 PubMed:1463770,miscellaneous:Elevated serum SSA protein levels may be associated with lung cancer.,polymorphism:Both SAA1 and SAA2

Nanjing BYabscience technology Co.,Ltd



have a number of alleles

### Background

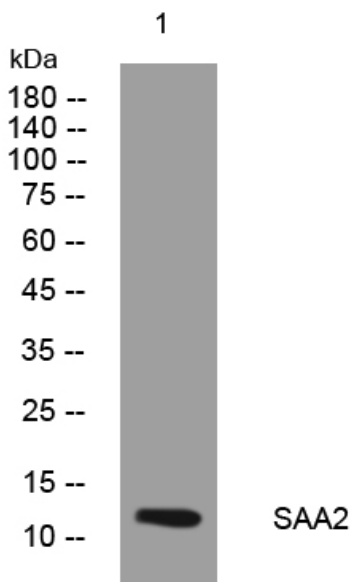
#### matters needing attention

Avoid repeated freezing and thawing!

#### Usage suggestions

This product can be used in immunological reaction related experiments. For more information, please consult technical personnel.

## Products Images



Western blot analysis of lysates from HEK293 cells, primary antibody was diluted at 1:1000, 4° over night