



CRTAP rabbit pAb

Catalog No	BYab-08572
Isotype	IgG
Reactivity	Human; Mouse
Applications	WB
Gene Name	CRTAP CASP
Protein Name	CRTAP
Immunogen	Synthesized peptide derived from human CRTAP AA range: 65-115
Specificity	This antibody detects endogenous levels of CRTAP at Human/Mouse
Formulation	Liquid in PBS containing 50% glycerol, 0.5% BSA and 0.02% sodium azide.
Source	Polyclonal, Rabbit,IgG
Purification	The antibody was affinity-purified from rabbit serum by affinity-chromatography using specific immunogen.
Dilution	WB 1: 500-2000
Concentration	1 mg/ml
Purity	≥90%
Storage Stability	-20°C/1 year
Synonyms	
Observed Band	
Cell Pathway	Secreted, extracellular space, extracellular matrix .
Tissue Specificity	Found in articular chondrocytes. Expressed in a variety of tissues.
Function	disease:Defects in CRTAP are the cause of osteogenesis imperfecta type 2B (OI-2B) [MIM:610854]. OI-2B is an autosomal recessive form of perinatal lethal OI. This form is designated OI-2B to distinguish it from the autosomal dominant form OI-2A.,disease:Defects in CRTAP are the cause of osteogenesis imperfecta type 7 (OI-7) [MIM:610682]. OI is a connective tissue disorder characterized by bone fragility and low bone mass. OI-7 is an autosomal recessive form of OI.,similarity:Belongs to the CRTAP/No55 family.,tissue specificity:Found in articular chondrocytes. Expressed in a variety of tissues.,
Background	The protein encoded by this gene is similar to the chicken and mouse CRTAP genes. The encoded protein is a scaffolding protein that may influence the activity of at least one member of the cytohesin/ARNO family in response to specific

Nanjing BYabscience technology Co.,Ltd



cellular stimuli. Defects in this gene are associated with osteogenesis imperfecta, a connective tissue disorder characterized by bone fragility and low bone mass. [provided by RefSeq, Jul 2008],

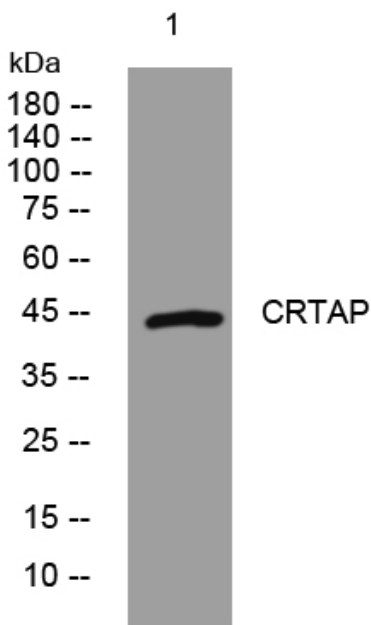
matters needing attention

Avoid repeated freezing and thawing!

Usage suggestions

This product can be used in immunological reaction related experiments. For more information, please consult technical personnel.

Products Images



Western blot analysis of lysates from HeLa cells, primary antibody was diluted at 1:1000, 4° over night