



YN3728

AMRP rabbit pAb

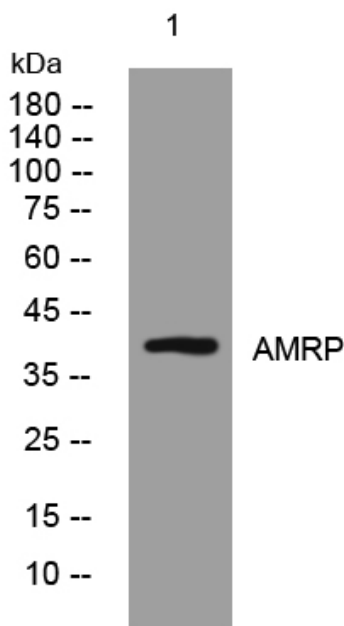
Catalog No	BYab-08570
Isotype	IgG
Reactivity	Human; Mouse;Rat
Applications	WB
Gene Name	LRPAP1 A2MRAP
Protein Name	AMRP
Immunogen	Synthesized peptide derived from human AMRP AA range: 277-327
Specificity	This antibody detects endogenous levels of AMRP at Human/Mouse/Rat
Formulation	Liquid in PBS containing 50% glycerol, 0.5% BSA and 0.02% sodium azide.
Source	Polyclonal, Rabbit,IgG
Purification	The antibody was affinity-purified from rabbit serum by affinity-chromatography using specific immunogen.
Dilution	WB 1: 500-2000
Concentration	1 mg/ml
Purity	≥90%
Storage Stability	-20°C/1 year
Synonyms	
Observed Band	
Cell Pathway	Rough endoplasmic reticulum lumen . Endoplasmic reticulum-Golgi intermediate compartment lumen . Golgi apparatus, cis-Golgi network . Golgi apparatus lumen . Endosome lumen . Cell surface . May be associated with receptors at the cell surface. .
Tissue Specificity	
Function	disease:In complex with the alpha-2-MR or gp330, it may have some role in the pathogenesis of membrane glomerular nephritis.,function:Interacts with LRP1/alpha-2-macroglobulin receptor and glycoprotein 330.,PTM:N-glycosylated.,similarity:Belongs to the alpha-2-MRAP family.,subcellular location:Intracellular and associated with cell surface

Nanjing BYabscience technology Co.,Ltd



	receptors. Found in the endoplasmic reticulum.,subunit:Present on cell surface forming a complex with the alpha-2-macroglobulin receptor heavy and light chains. Binds LRP1B; binding is followed by internalization and degradation.,
Background	This gene encodes a protein that interacts with the low density lipoprotein (LDL) receptor-related protein and facilitates its proper folding and localization by preventing the binding of ligands. Mutations in this gene have been identified in individuals with myopia 23. Alternative splicing results in multiple transcript variants. [provided by RefSeq, Dec 2013],
matters needing attention	Avoid repeated freezing and thawing!
Usage suggestions	This product can be used in immunological reaction related experiments. For more information, please consult technical personnel.

Products Images



Western blot analysis of lysates from HeLa cells, primary antibody was diluted at 1:1000, 4° over night