



EIF1A rabbit pAb

Catalog No	BYab-08546
Isotype	IgG
Reactivity	Human; Mouse;Rat
Applications	WB
Gene Name	EIF1AD
Protein Name	EIF1A
Immunogen	Synthesized peptide derived from human EIF1A AA range: 2-52
Specificity	This antibody detects endogenous levels of EIF1A at Human/Mouse/Rat
Formulation	Liquid in PBS containing 50% glycerol, 0.5% BSA and 0.02% sodium azide.
Source	Polyclonal, Rabbit,IgG
Purification	The antibody was affinity-purified from rabbit serum by affinity-chromatography using specific immunogen.
Dilution	WB 1: 500-2000
Concentration	1 mg/ml
Purity	≥90%
Storage Stability	-20°C/1 year
Synonyms	
Observed Band	
Cell Pathway	Nucleus .
Tissue Specificity	Expressed in the glioblastoma cell line U-87MG, the embryonic kidney cell line HEK293, the pancreatic carcinoma cell line PANC-1, the breast carcinoma cell line MCF-7, the lung cancer cell line NCI-H460, and the chronic myelogenous leukemia cell line K-562.
Function	similarity:Belongs to the EIF1AD family.,similarity:Contains 1 S1-like domain.,
Background	
matters needing attention	Avoid repeated freezing and thawing!

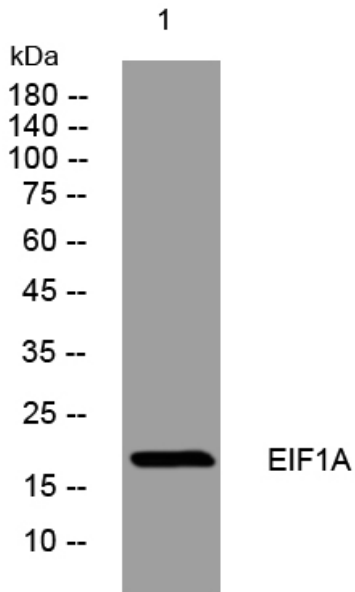
Nanjing BYabscience technology Co.,Ltd



Usage suggestions

This product can be used in immunological reaction related experiments. For more information, please consult technical personnel.

Products Images



Western blot analysis of lysates from U2OS cells, primary antibody was diluted at 1:1000, 4° over night