



PARVA rabbit pAb

Catalog No	BYab-08540
Isotype	IgG
Reactivity	Human; Mouse;Rat
Applications	WB
Gene Name	PARVA MXRA2
Protein Name	PARVA
Immunogen	Synthesized peptide derived from human PARVA AA range: 178-228
Specificity	This antibody detects endogenous levels of PARVA at Human/Mouse/Rat
Formulation	Liquid in PBS containing 50% glycerol, 0.5% BSA and 0.02% sodium azide.
Source	Polyclonal, Rabbit,IgG
Purification	The antibody was affinity-purified from rabbit serum by affinity-chromatography using specific immunogen.
Dilution	WB 1: 500-2000
Concentration	1 mg/ml
Purity	≥90%
Storage Stability	-20°C/1 year
Synonyms	
Observed Band	
Cell Pathway	Cell junction, focal adhesion. Cell membrane; Peripheral membrane protein; Cytoplasmic side. Cytoplasm, cytoskeleton. Cytoplasm, myofibril, sarcomere, Z line . Constituent of focal adhesions. Associates with the actin cytoskeleton.
Tissue Specificity	Widely expressed, with highest levels in heart, skeletal muscle, kidney and liver.
Function	function:Probably plays a role in the regulation of cell adhesion and cytoskeleton organization.,similarity:Belongs to the parvin family.,similarity:Contains 2 CH (calponin-homology) domains.,subcellular location:Constituent of focal adhesions.,subunit:Interacts with TGFB1I1 (By similarity). Interacts with integrin-linked protein kinase and probably with actin and the LD1 and LD4 motifs of PXN. Interacts with CDGAP.,tissue specificity:Widely expressed, with highest levels in heart, skeletal muscle, kidney and liver.,
Background	This gene encodes a member of the parvin family of actin-binding proteins. Parvins are associated with focal contacts and contain calponin homology domains that bind to actin filaments. The encoded protein is part of the

Nanjing BYabscience technology Co.,Ltd



integrin-linked kinase signaling complex and plays a role in cell adhesion, motility and survival. [provided by RefSeq, Dec 2010],

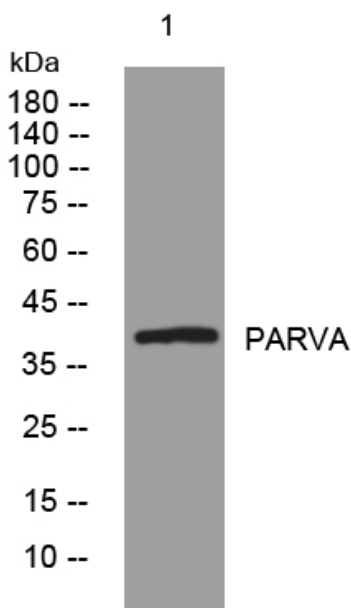
matters needing attention

Avoid repeated freezing and thawing!

Usage suggestions

This product can be used in immunological reaction related experiments. For more information, please consult technical personnel.

Products Images



Western blot analysis of lysates from U2OS cells, primary antibody was diluted at 1:1000, 4° over night