



SCO1 rabbit pAb

Catalog No	BYab-08527
Isotype	IgG
Reactivity	Human; Mouse
Applications	WB
Gene Name	SCO1 SCOD1
Protein Name	SCO1
Immunogen	Synthesized peptide derived from human SCO1 AA range: 223-273
Specificity	This antibody detects endogenous levels of SCO1 at Human/Mouse
Formulation	Liquid in PBS containing 50% glycerol, 0.5% BSA and 0.02% sodium azide.
Source	Polyclonal, Rabbit,IgG
Purification	The antibody was affinity-purified from rabbit serum by affinity-chromatography using specific immunogen.
Dilution	WB 1: 500-2000
Concentration	1 mg/ml
Purity	≥90%
Storage Stability	-20°C/1 year
Synonyms	
Observed Band	
Cell Pathway	Mitochondrion . Mitochondrion inner membrane ; Single-pass membrane protein .
Tissue Specificity	Predominantly expressed in tissues characterized by high rates of oxidative phosphorylation (OxPhos), including muscle, heart, and brain.
Function	disease:Defects in SCO1 are a cause of cytochrome c oxidase deficiency (COX deficiency) [MIM:220110]. COX deficiency is a clinically heterogeneous disorder. The clinical features are ranging from isolated myopathy to severe multisystem disease, with onset from infancy to adulthood.,function:Thought to play a role in cellular copper homeostasis, mitochondrial redox signaling or insertion of copper into the active site of COX.,similarity:Belongs to the SCO1/2 family.,subunit:Homodimer.,tissue specificity:Predominantly expressed in tissues characterized by high rates of oxidative phosphorylation (OxPhos), including muscle, heart, and brain.,
Background	Mammalian cytochrome c oxidase (COX) catalyzes the transfer of reducing equivalents from cytochrome c to molecular oxygen and pumps protons across

Nanjing BYabscience technology Co.,Ltd



the inner mitochondrial membrane. In yeast, 2 related COX assembly genes, SCO1 and SCO2 (synthesis of cytochrome c oxidase), enable subunits 1 and 2 to be incorporated into the holoprotein. This gene is the human homolog to the yeast SCO1 gene. [provided by RefSeq, Jul 2008],

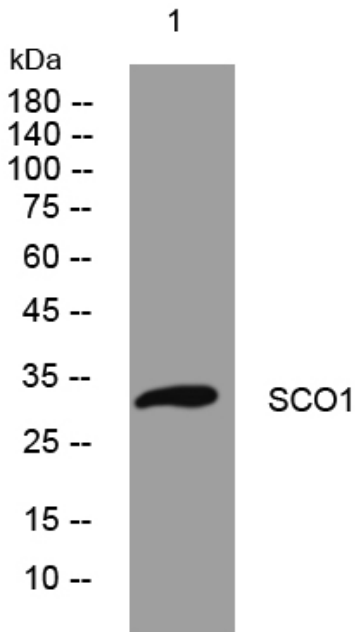
matters needing attention

Avoid repeated freezing and thawing!

Usage suggestions

This product can be used in immunological reaction related experiments. For more information, please consult technical personnel.

Products Images



Western blot analysis of lysates from U2OS cells, primary antibody was diluted at 1:1000, 4° over night