



ROM1 rabbit pAb

Catalog No	BYab-08523
Isotype	IgG
Reactivity	Human; Mouse;Rat;C. parvum
Applications	WB
Gene Name	ROM1 TSPAN23
Protein Name	ROM1
Immunogen	Synthesized peptide derived from human ROM1 AA range: 163-213
Specificity	This antibody detects endogenous levels of ROM1 at Human/Mouse/Rat
Formulation	Liquid in PBS containing 50% glycerol, 0.5% BSA and 0.02% sodium azide.
Source	Polyclonal, Rabbit,IgG
Purification	The antibody was affinity-purified from rabbit serum by affinity-chromatography using specific immunogen.
Dilution	WB 1: 500-2000
Concentration	1 mg/ml
Purity	≥90%
Storage Stability	-20°C/1 year
Synonyms	
Observed Band	
Cell Pathway	Photoreceptor inner segment membrane ; Multi-pass membrane protein . Photoreceptor outer segment membrane ; Multi-pass membrane protein .
Tissue Specificity	Retina photoreceptors (at protein level) (PubMed:1610568, PubMed:8504299). In rim region of ROS disks (PubMed:1610568).
Function	disease:Defects in ROM1 may cause retinitis pigmentosa (RP) [MIM:268000]; when associated with defects in PRPH2.,function:May function as an adhesion molecule involved in stabilization and compaction of outer segment disks or in the maintenance of the curvature of the rim. It is essential for disk morphogenesis.,online information:Retina International's Scientific Newsletter,similarity:Belongs to the PRPH2/ROM1 family.,subunit:Homodimer; disulfide-linked. Probably forms a complex with a PRPH2 homodimer. Other proteins could associate with this complex in rods.,tissue specificity:Retina (photoreceptor). In rim region of ROS (rod outer segment) disks.,
Background	This gene is a member of a photoreceptor-specific gene family and encodes an integral membrane protein found in the photoreceptor disk rim of the eye. This

Nanjing BYabscience technology Co.,Ltd



protein can form homodimers or can heterodimerize with another photoreceptor, retinal degeneration slow (RDS). It is essential for disk morphogenesis, and may also function as an adhesion molecule involved in the stabilization and compaction of outer segment disks or in the maintenance of the curvature of the rim. Certain defects in this gene have been associated with the degenerative eye disease retinitis pigmentosa. [provided by RefSeq, Jul 2008],

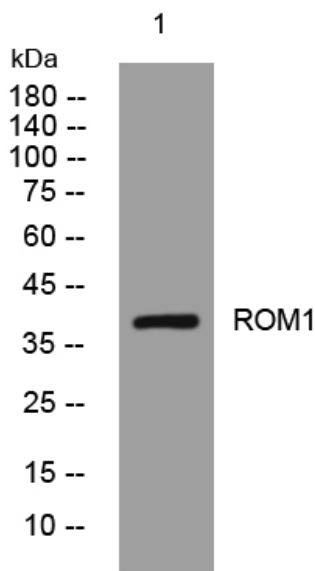
matters needing attention

Avoid repeated freezing and thawing!

Usage suggestions

This product can be used in immunological reaction related experiments. For more information, please consult technical personnel.

Products Images



Western blot analysis of lysates from CACO2 cells, primary antibody was diluted at 1:1000, 4° over night