



# S6OS1 rabbit pAb

<b>Catalog No</b>	BYab-08522
<b>Isotype</b>	IgG
<b>Reactivity</b>	Human; Mouse
<b>Applications</b>	WB
<b>Gene Name</b>	SIX6OS1 C14orf39
<b>Protein Name</b>	S6OS1
<b>Immunogen</b>	Synthesized peptide derived from human S6OS1 AA range: 511-561
<b>Specificity</b>	This antibody detects endogenous levels of S6OS1 at Human/Mouse
<b>Formulation</b>	Liquid in PBS containing 50% glycerol, 0.5% BSA and 0.02% sodium azide.
<b>Source</b>	Polyclonal, Rabbit,IgG
<b>Purification</b>	The antibody was affinity-purified from rabbit serum by affinity-chromatography using specific immunogen.
<b>Dilution</b>	WB 1: 500-2000
<b>Concentration</b>	1 mg/ml
<b>Purity</b>	≥90%
<b>Storage Stability</b>	-20°C/1 year
<b>Synonyms</b>	
<b>Observed Band</b>	
<b>Cell Pathway</b>	Chromosome . Component of the central element of the synaptonemal complex. In spermatocytes, detected from zygonema to pachynema and localizes along synapsed lateral elements. Loading to the central element of the synaptonemal complex is dependent on the assembly of the tripartite synaptonemal complex structure that occurs upon synapsis between homologous chromosomes. .
<b>Tissue Specificity</b>	Highest expression in retina, skeletal muscle, testis and colon.
<b>Function</b>	function:May be involved in eye development through regulation of the SIX6 transcription factor.,tissue specificity:Highest expression in retina, skeletal muscle and colon.,
<b>Background</b>	
<b>matters needing attention</b>	Avoid repeated freezing and thawing!

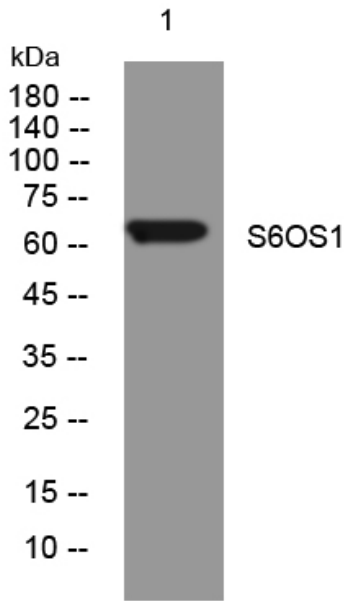
Nanjing BYabscience technology Co.,Ltd



**Usage suggestions**

This product can be used in immunological reaction related experiments. For more information, please consult technical personnel.

**Products Images**



Western blot analysis of lysates from SH-SY5Y cells, primary antibody was diluted at 1:1000, 4° over night