



FAN rabbit pAb

Catalog No	BYab-08516
Isotype	IgG
Reactivity	Human; Mouse
Applications	WB
Gene Name	NSMAF FAN
Protein Name	FAN
Immunogen	Synthesized peptide derived from human FAN AA range: 147-197
Specificity	This antibody detects endogenous levels of FAN at Human/Mouse
Formulation	Liquid in PBS containing 50% glycerol, 0.5% BSA and 0.02% sodium azide.
Source	Polyclonal, Rabbit,IgG
Purification	The antibody was affinity-purified from rabbit serum by affinity-chromatography using specific immunogen.
Dilution	WB 1: 500-2000
Concentration	1 mg/ml
Purity	≥90%
Storage Stability	-20°C/1 year
Synonyms	
Observed Band	
Cell Pathway	cytoplasm,cytosol,endomembrane system,extrinsic component of membrane,
Tissue Specificity	Ubiquitous.
Function	function:Couples the p55 TNF-receptor (TNF-R55 / TNFR1) to neutral sphingomyelinase (N-SMASE). Specifically binds to the N-smase activation domain of TNF-R55. May regulate ceramide production by N-SMASE.,similarity:Contains 1 BEACH domain.,similarity:Contains 1 GRAM domain.,similarity:Contains 6 WD repeats.,tissue specificity:Ubiquitous.,
Background	This gene encodes a WD-repeat protein that binds the cytoplasmic sphingomyelinase activation domain of the 55kD tumor necrosis factor receptor. This protein is required for TNF-mediated activation of neutral sphingomyelinase and may play a role in regulating TNF-induced cellular responses such as inflammation. Alternative splicing results in multiple transcript variants.[provided by RefSeq, Jan 2009],

Nanjing BYabscience technology Co.,Ltd



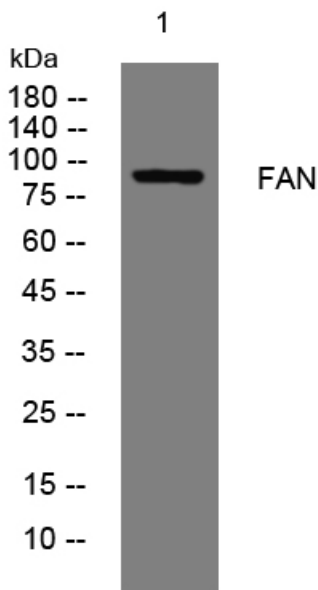
matters needing attention

Avoid repeated freezing and thawing!

Usage suggestions

This product can be used in immunological reaction related experiments. For more information, please consult technical personnel.

Products Images



Western blot analysis of lysates from HpeG2 cells, primary antibody was diluted at 1:1000, 4° over night