



RFX4 rabbit pAb

Catalog No	BYab-08495
Isotype	IgG
Reactivity	Human; Mouse
Applications	WB
Gene Name	RFX4
Protein Name	RFX4
Immunogen	Synthesized peptide derived from human RFX4 AA range: 439-489
Specificity	This antibody detects endogenous levels of RFX4 at Human/Mouse
Formulation	Liquid in PBS containing 50% glycerol, 0.5% BSA and 0.02% sodium azide.
Source	Polyclonal, Rabbit,IgG
Purification	The antibody was affinity-purified from rabbit serum by affinity-chromatography using specific immunogen.
Dilution	WB 1: 500-2000
Concentration	1 mg/ml
Purity	≥90%
Storage Stability	-20°C/1 year
Synonyms	
Observed Band	
Cell Pathway	Nucleus .
Tissue Specificity	Isoform 1: Expressed in brain and gliomas (at protein level). Isoform 2: Testis-specific (at protein level). Isoform 3: Testis-specific (at protein level). Isoform 3: Expressed at a higher level in adult testes and ejaculated spermatozoa than in fetal testes. Isoform 4: Testis-specific.
Function	function:May activate transcription by interacting directly with the X-box.,similarity:Belongs to the RFX family.,subunit:Homodimer. Heterodimer with RFX2 and RFX3. Binds DNA.,tissue specificity:Isoform 4 is testis-specific. Isoform 1 is expressed in brain and gliomas. Isoform 2 and isoform 3 are testis-specific (at protein level). Isoform 1 is expressed in brain (at protein level). Isoform 3 is expressed at a higher level in adult testes and ejaculated spermatozoa than in fetal testes.,
Background	This gene is a member of the regulatory factor X gene family, which encodes transcription factors that contain a highly-conserved winged helix DNA binding

Nanjing BYabscience technology Co.,Ltd



domain. The protein encoded by this gene is structurally related to regulatory factors X1, X2, X3, and X5. It has been shown to interact with itself as well as with regulatory factors X2 and X3, but it does not interact with regulatory factor X1. Alternative splicing results in multiple transcript variants. [provided by RefSeq, May 2011],

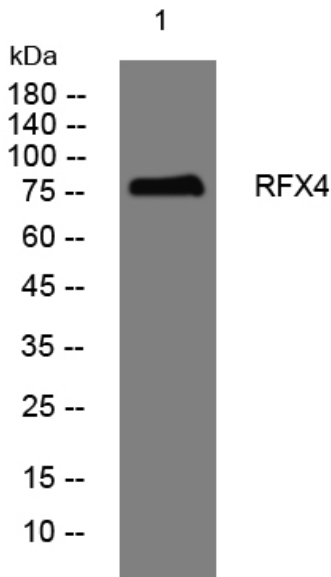
matters needing attention

Avoid repeated freezing and thawing!

Usage suggestions

This product can be used in immunological reaction related experiments. For more information, please consult technical personnel.

Products Images



Western blot analysis of lysates from MCF-7 cells, primary antibody was diluted at 1:1000, 4° over night