



DOC10 rabbit pAb

| | |
|---------------------------|--|
| Catalog No | BYab-08491 |
| Isotype | IgG |
| Reactivity | Human; Mouse |
| Applications | WB |
| Gene Name | DOCK10 KIAA0694 ZIZ3 |
| Protein Name | DOC10 |
| Immunogen | Synthesized peptide derived from human DOC10 AA range: 2051-2101 |
| Specificity | This antibody detects endogenous levels of DOC10 at Human/Mouse |
| Formulation | Liquid in PBS containing 50% glycerol, 0.5% BSA and 0.02% sodium azide. |
| Source | Polyclonal, Rabbit,IgG |
| Purification | The antibody was affinity-purified from rabbit serum by affinity-chromatography using specific immunogen. |
| Dilution | WB 1: 500-2000 |
| Concentration | 1 mg/ml |
| Purity | ≥90% |
| Storage Stability | -20°C/1 year |
| Synonyms | |
| Observed Band | |
| Cell Pathway | Nucleus . Cytoplasm . Cell projection, dendritic spine . |
| Tissue Specificity | Expressed at low level in brain and lung. Isoform 1 is enriched in normal T-cells, isoform 3 is enriched in normal B-cells and chronic lymphocytic leukemia (CLL) B-cells. |
| Function | domain:The DHR-2 domain may mediate some GEF activity.,function:Potential guanine nucleotide exchange factor (GEF). GEF proteins activate some small GTPases by exchanging bound GDP for free GTP.,similarity:Belongs to the DOCK family.,similarity:Contains 1 DHR-1 (CZH-1) domain.,similarity:Contains 1 DHR-2 (CZH-2) domain.,similarity:Contains 1 PH domain.,tissue specificity:Expressed at low level in brain and lung., |
| Background | This gene encodes a member of the dedicator of cytokinesis protein family. Members of this family are guanosine nucleotide exchange factors for Rho GTPases and defined by the presence of conserved DOCK-homology regions. The encoded protein belongs to the D (or Zizimin) subfamily of DOCK proteins, |

Nanjing BYabscience technology Co.,Ltd



which also contain an N-terminal pleckstrin homology domain. Alternatively spliced transcript variants that encode different isoforms have been described. [provided by RefSeq, Mar 2014],

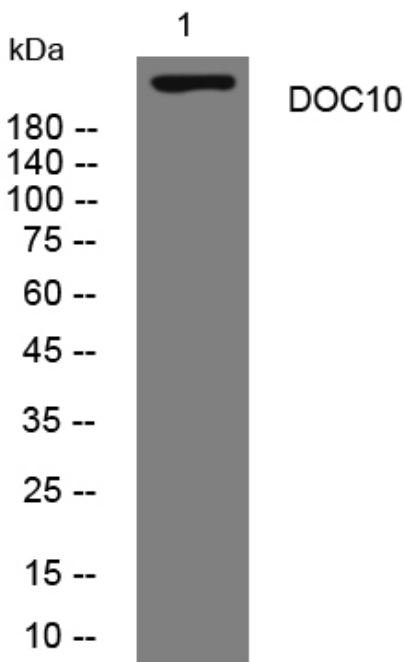
matters needing attention

Avoid repeated freezing and thawing!

Usage suggestions

This product can be used in immunological reaction related experiments. For more information, please consult technical personnel.

Products Images



Western blot analysis of lysates from Jarkat cells, primary antibody was diluted at 1:1000, 4° over night