



ANO3 rabbit pAb

Catalog No	BYab-08479
Isotype	IgG
Reactivity	Human; Mouse
Applications	WB
Gene Name	ANO3 C11orf25 TMEM16C GENX-3947
Protein Name	ANO3
Immunogen	Synthesized peptide derived from human ANO3 AA range: 518-568
Specificity	This antibody detects endogenous levels of ANO3 at Human/Mouse
Formulation	Liquid in PBS containing 50% glycerol, 0.5% BSA and 0.02% sodium azide.
Source	Polyclonal, Rabbit,IgG
Purification	The antibody was affinity-purified from rabbit serum by affinity-chromatography using specific immunogen.
Dilution	WB 1: 500-2000
Concentration	1 mg/ml
Purity	≥90%
Storage Stability	-20°C/1 year
Synonyms	
Observed Band	
Cell Pathway	Cell membrane ; Multi-pass membrane protein . Shows an intracellular localization. .
Tissue Specificity	Highly expressed in the forebrain striatum.
Function	function:May act as a calcium-activated chloride channel.,similarity:Belongs to the anoctamin family.,
Background	The protein encoded by this gene belongs to the TMEM16 family of predicted membrane proteins, that are also known as anoctamins. While little is known about the function of this gene, mutations in this gene have been associated with some cases of autosomal dominant craniocervical dystonia. Cells from individuals with a mutation in this gene exhibited abnormalities in endoplasmic reticulum-dependent calcium signaling. Studies in rat show that the rat ortholog of this protein interacts with, and modulates the activity of a sodium-activated potassium channel. Deletion of this gene caused increased pain sensitivity in the rat model system. Alternative splicing results in multiple transcript variants

Nanjing BYabscience technology Co.,Ltd



encoding different isoforms. [provided by RefSeq, Aug 2015],

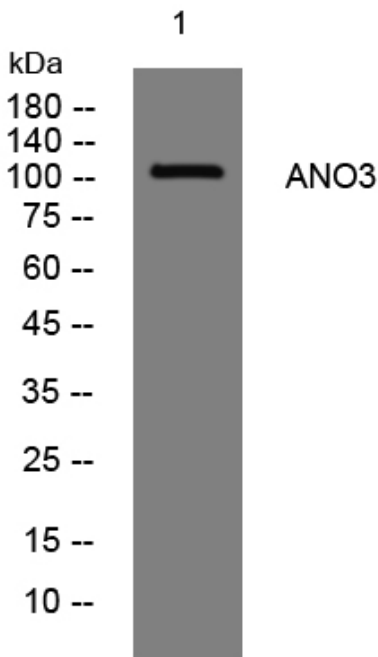
matters needing attention

Avoid repeated freezing and thawing!

Usage suggestions

This product can be used in immunological reaction related experiments. For more information, please consult technical personnel.

Products Images



Western blot analysis of lysates from Jarkat cells, primary antibody was diluted at 1:1000, 4° over night