



# S2533 rabbit pAb

<b>Catalog No</b>	BYab-08470
<b>Isotype</b>	IgG
<b>Reactivity</b>	Human; Mouse
<b>Applications</b>	WB
<b>Gene Name</b>	SLC25A33
<b>Protein Name</b>	S2533
<b>Immunogen</b>	Synthesized peptide derived from human S2533 AA range: 209-259
<b>Specificity</b>	This antibody detects endogenous levels of S2533 at Human/Mouse
<b>Formulation</b>	Liquid in PBS containing 50% glycerol, 0.5% BSA and 0.02% sodium azide.
<b>Source</b>	Polyclonal, Rabbit,IgG
<b>Purification</b>	The antibody was affinity-purified from rabbit serum by affinity-chromatography using specific immunogen.
<b>Dilution</b>	WB 1: 500-2000
<b>Concentration</b>	1 mg/ml
<b>Purity</b>	≥90%
<b>Storage Stability</b>	-20°C/1 year
<b>Synonyms</b>	
<b>Observed Band</b>	
<b>Cell Pathway</b>	Mitochondrion inner membrane ; Multi-pass membrane protein .
<b>Tissue Specificity</b>	Expressed in the central nervous system. Also expressed in testis and skeletal muscle. Weakly expressed in heart, liver, kidney, prostate, colon and peripheral blood leukocytes.
<b>Function</b>	function:Probable mitochondrial transporter which participates in dendritic cell endocytosis. May associate with mitochondrial oxidative phosphorylation.,similarity:Belongs to the mitochondrial carrier family.,similarity:Contains 3 Solcar repeats.,tissue specificity:Expressed in the central nervous system. Also expressed in testis and skeletal muscle. Weakly expressed in heart, liver, kidney, prostate, colon and peripheral blood leukocytes.,
<b>Background</b>	SLC25A33 belongs to the SLC25 family of mitochondrial carrier proteins (Haitina et al., 2006 [PubMed 16949250]).[supplied by OMIM, Mar 2008],

Nanjing BYabscience technology Co.,Ltd



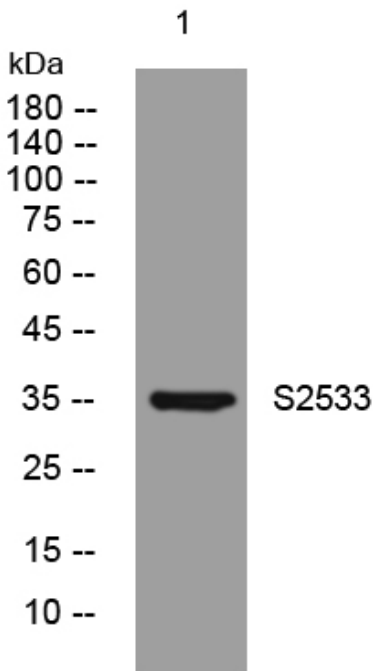
**matters needing attention**

Avoid repeated freezing and thawing!

**Usage suggestions**

This product can be used in immunological reaction related experiments. For more information, please consult technical personnel.

**Products Images**



Western blot analysis of lysates from KB cells, primary antibody was diluted at 1:1000, 4° over night