



DHSO rabbit pAb

Catalog No	BYab-08468
Isotype	IgG
Reactivity	Human; Mouse;Rat
Applications	WB;IP
Gene Name	SORD
Protein Name	DHSO
Immunogen	Synthesized peptide derived from human DHSO
Specificity	This antibody detects endogenous levels of DHSO at Human/Mouse/Rat
Formulation	Liquid in PBS containing 50% glycerol, 0.5% BSA and 0.02% sodium azide.
Source	Polyclonal, Rabbit,IgG
Purification	The antibody was affinity-purified from rabbit serum by affinity-chromatography using specific immunogen.
Dilution	WB 1: 500-2000 IP 1:200
Concentration	1 mg/ml
Purity	≥90%
Storage Stability	-20°C/1 year
Synonyms	
Observed Band	
Cell Pathway	Mitochondrion membrane ; Peripheral membrane protein . Cell projection, cilium, flagellum . Associated with mitochondria of the midpiece and near the plasma membrane in the principal piece of the flagellum. Also found in the epididymosome, secreted by the epididymal epithelium and that transfers proteins from the epididymal fluid to the sperm surface. .
Tissue Specificity	Expressed in liver (PubMed:3365415). Expressed in kidney and epithelial cells of both benign and malignant prostate tissue. Expressed in epididymis (at protein level).
Function	catalytic activity:L-iditol + NAD(+) = L-sorbose + NADH.,cofactor:Binds 1 zinc ion per subunit.,similarity:Belongs to the zinc-containing alcohol dehydrogenase family.,subunit:Homotetramer.,
Background	Sorbitol dehydrogenase (SORD; EC 1.1.1.14) catalyzes the interconversion of polyols and their corresponding ketoses, and together with aldose reductase (ALDR1; MIM 103880), makes up the sorbitol pathway that is believed to play an important role in the development of diabetic complications (summarized by Carr

Nanjing BYabscience technology Co.,Ltd



and Markham, 1995 [PubMed 8535074]). The first reaction of the pathway (also called the polyol pathway) is the reduction of glucose to sorbitol by ALDR1 with NADPH as the cofactor. SORD then oxidizes the sorbitol to fructose using NAD(+) cofactor.[supplied by OMIM, Jul 2010],

matters needing attention

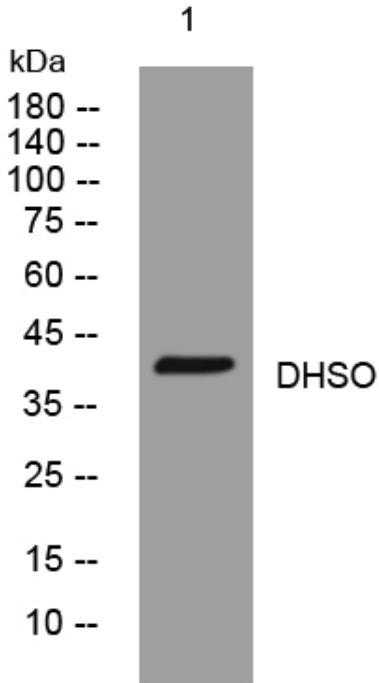
Avoid repeated freezing and thawing!

Usage suggestions

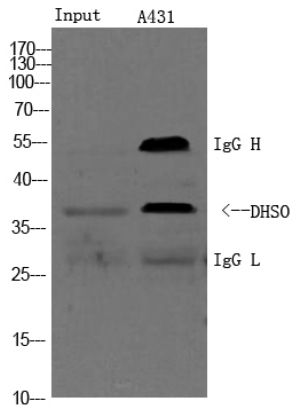
This product can be used in immunological reaction related experiments. For more information, please consult technical personnel.



Products Images



Western blot analysis of lysates from U2OS cells,
primary antibody was diluted at 1:1000, 4° over night



1) Input: Hela Lysate 2) IP product: IP dilute 1: 200
Western blot analysis: primary antibody : 1:2000
Secondary antibody: Goat anti-Mouse IgG(RS0002), 1:
5000

Nanjing BYabscience technology Co.,Ltd