



LYRM4 rabbit pAb

| | |
|---------------------------|--|
| Catalog No | BYab-08460 |
| Isotype | IgG |
| Reactivity | Human; Mouse |
| Applications | IHC;IF |
| Gene Name | LYRM4 C6orf149 ISD11 CGI-203 |
| Protein Name | LYRM4 |
| Immunogen | Synthesized peptide derived from human LYRM4 AA range: 30-80 |
| Specificity | This antibody detects endogenous levels of LYRM4 at Human/Mouse |
| Formulation | Liquid in PBS containing 50% glycerol, 0.5% BSA and 0.02% sodium azide. |
| Source | Polyclonal, Rabbit,IgG |
| Purification | The antibody was affinity-purified from rabbit serum by affinity-chromatography using specific immunogen. |
| Dilution | IHC-p 1: 50-200. IF 1:50-200 |
| Concentration | 1 mg/ml |
| Purity | ≥90% |
| Storage Stability | -20°C/1 year |
| Synonyms | |
| Observed Band | |
| Cell Pathway | Mitochondrion. Nucleus. |
| Tissue Specificity | Reduced mRNA levels in Friedreich ataxia patients. |
| Function | function:May be involved in mitochondrial iron-sulfur protein biosynthesis.,miscellaneous:Reduction of LYRM4 levels by siRNA increases the total iron content, and reduces cytosolic and mitochondrial aconitase activities and NFS1 protein levels.,pathway:Cofactor biosynthesis; iron-sulfur cluster biosynthesis.,similarity:Belongs to the complex I LYR family.,subunit:Interacts with FXN. Interaction is increased by nickel. Interaction is inhibited by calcium, magnesium, manganese, copper, cobalt, zinc, and iron. Forms a complex with the cytosolic/nuclear form of NFS1. The complex increased the stability of NFS1.,tissue specificity:Reduced mRNA levels in Friedreich ataxia (FA) patients., |
| Background | The protein encoded by this gene is found in both mitochondria and the nucleus, where it binds cysteine desulfurase and helps free inorganic sulfur for Fe/S |

Nanjing BYabscience technology Co.,Ltd



clusters. Disruption of this gene negatively impacts mitochondrial and cytosolic iron homeostasis. [provided by RefSeq, Sep 2016],

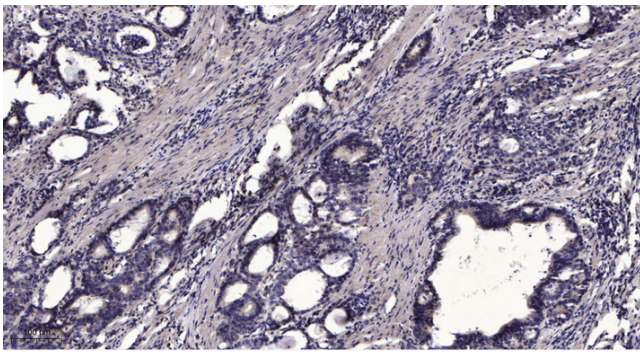
matters needing attention

Avoid repeated freezing and thawing!

Usage suggestions

This product can be used in immunological reaction related experiments. For more information, please consult technical personnel.

Products Images



Immunohistochemical analysis of paraffin-embedded human Gastric adenocarcinoma. 1, Antibody was diluted at 1:200(4° overnight). 2, Tris-EDTA,pH9.0 was used for antigen retrieval. 3,Secondary antibody was diluted at 1:200(room temperature, 45min).