



ZIM2 rabbit pAb

Catalog No	BYab-08458
Isotype	IgG
Reactivity	Human;Rat;Mouse;
Applications	WB
Gene Name	ZIM2 ZNF656
Protein Name	ZIM2
Immunogen	Synthesized peptide derived from human ZIM2 AA range: 50-100
Specificity	This antibody detects endogenous levels of ZIM2 at Human
Formulation	Liquid in PBS containing 50% glycerol, 0.5% BSA and 0.02% sodium azide.
Source	Polyclonal, Rabbit,IgG
Purification	The antibody was affinity-purified from rabbit serum by affinity-chromatography using specific immunogen.
Dilution	WB 1: 500-2000
Concentration	1 mg/ml
Purity	≥90%
Storage Stability	-20°C/1 year
Synonyms	
Observed Band	
Cell Pathway	Nucleus .
Tissue Specificity	Highest levels of expression in adult testis; modest levels in fetal kidney and brain.
Function	function:Induces apoptosis in cooperation with SIAH1A. Acts as a mediator between TP53/p53 and BAX in a neuronal death pathway that is activated by DNA damage. Acts synergistically with TRAF2 and inhibits TNF induced apoptosis through activation of NF-kappa-B (By similarity). Possesses a tumor suppressing activity in glioma cells.,function:May be involved in transcriptional regulation.,similarity:Belongs to the krueppel C2H2-type zinc-finger protein family.,similarity:Contains 1 KRAB domain.,similarity:Contains 1 SCAN box domain.,similarity:Contains 12 C2H2-type zinc fingers.,similarity:Contains 5 C2H2-type zinc fingers.,subunit:Homodimer. Interacts with SIAH1A and SIAH2. Interacts with TRAF2.,tissue specificity:Brain, glial cells, astrocytes, embryo, placenta, testis, ovary and utreus. In the placenta it is found in the layer of villous cytotrophoblast cells while in the ovary it is fou

Nanjing BYabscience technology Co.,Ltd



Background

In human, ZIM2 and PEG3 (GeneID:5178) are two distinct genes that share a set of 5' exons and have a common promoter, and both genes are paternally expressed. Alternative splicing events connect the shared exons either with the remaining 4 exons unique to ZIM2, or with the remaining 2 exons unique to PEG3. This is in contrast to mouse and cow, where ZIM2 and PEG3 genes do not share exons in common, and the imprinting status of ZIM2 is also not conserved amongst mammals. Additional 5' alternatively spliced transcripts encoding the same protein have been found for the human ZIM2 gene. [provided by RefSeq, Oct 2010],

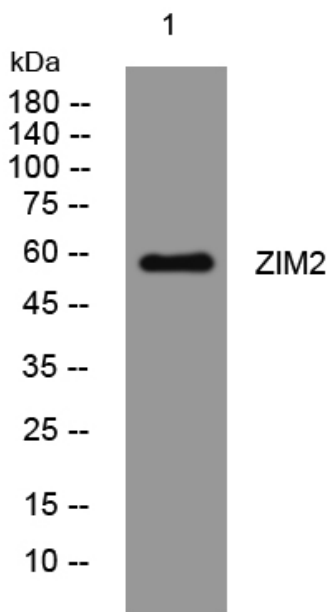
matters needing attention

Avoid repeated freezing and thawing!

Usage suggestions

This product can be used in immunological reaction related experiments. For more information, please consult technical personnel.

Products Images



Western blot analysis of lysates from HeLa cells, primary antibody was diluted at 1:1000, 4° over night